

**EMBARGOED UNTIL 11.30 A.M. 16 JANUARY 1990**

**TRANSITION FROM EDUCATION TO WORK  
AUSTRALIA  
MAY 1989**

**IAN CASTLES  
Australian Statistician**

**AUSTRALIAN BUREAU OF STATISTICS**

**CATALOGUE NO. 6227.0**

© Commonwealth of Australia 1990

PHONE INQUIRIES	<ul style="list-style-type: none"> <li>• <i>about these statistics and the availability of related unpublished statistics</i> — contact Ms Nicolle Wittmann on Canberra (062) 52 6578 or any ABS State office.</li> <li>• <i>about other statistics and ABS services</i> — contact Information Services on Canberra (062) 52 6627, 52 5402, 52 6007 or any ABS State office.</li> </ul>
MAIL INQUIRIES	<ul style="list-style-type: none"> <li>• <i>write to Information Services, ABS, P.O. Box 10, Belconnen, A.C.T. 2616</i> or any ABS State office.</li> </ul>
ELECTRONIC SERVICES	<ul style="list-style-type: none"> <li>• on VIATEL — key *656#.</li> <li>• on AUSSTATS — phone (062) 52 6017.</li> <li>• ON TELESTATS — phone (062) 52 5404 Foreign Trade statistics inquiries, (062) 52 5405 Main Economic Indicator inquiries.</li> </ul>

## CONTENTS

<i>Table</i>	<i>Page</i>
. . Summary of Findings	1
<b>Persons aged 15 to 64, May 1984 to May 1989—</b>	
1. Age, whether attended an educational institution and type of attendance in previous year, whether attending full-time education and labour force status	5
<b>Persons aged 15 to 19, May 1984 to May 1989—</b>	
2. Age, gender, whether attending an educational institution full time and type of institution attending	6
<b>Leavers aged 15 to 64, May 1984 to May 1989—</b>	
Type of educational institution attended full time in previous year—	
3. Labour force status	7
4. Whether attending an educational institution	7
<b>Persons aged 15 to 64—</b>	
Whether attended an educational institution in 1988 and whether attending an educational institution—	
5. Labour force status, age, type of attendance in 1988 and type of attendance in 1989	8
6. Type of educational institution attended in 1988 and type of educational institution attending	9
Age, whether attending an educational institution, type of attendance and type of educational institution attending—	
7. Gender	9
8. Labour force status and gender	10
9. Labour force status, educational attainment and gender	12
<b>Persons aged 15 to 64 who attended school in 1988—</b>	
10. Labour force status, type of attendance at school in 1988, whether attending an educational institution, type of educational institution attending and type of attendance	13
<b>Persons aged 15 to 64 who attended a tertiary institution in 1988—</b>	
11. Labour force status, type of tertiary attendance in 1988, whether attending an educational institution, type of educational institution attending and type of attendance	13
<b>Status of current study arrangements, educational attainment and gender —</b>	
12. Age	14
13. Labour force status	14
<b>Persons aged 15 to 24 who attended school in 1988 but were not attending school in May 1989—</b>	
Whether attending a tertiary institution, type of attendance, type of school last attended and gender—	
14. Type of tertiary institution attending	15
15. Labour force status	16

**CONTENTS — continued**

<i>Table</i>	<i>Page</i>
<b>Persons aged 15 to 24 who attended an educational institution full time in 1988—</b>	
16. Type of educational institution attended full time in 1988, whether attending full-time education, whether attending same type of educational institution as in 1988 and gender	17
<b>Leavers aged 15 to 64—</b>	
17. Type of educational institution attended full time in 1988— Gender, age at time of leaving full-time education and whether attending an educational institution	17
18. Age and gender	18
19. Labour force status and age	18
20. Age, gender and time of leaving full-time education	19
21. Age, gender and labour force status	19
<b>Employed leavers aged 15 to 64—</b>	
22. Type of educational institution attended full time in 1988 and gender— Industry and whether full-time or part-time workers	20
23. Occupation	20
<b>Apprentices, May 1984 to May 1989—</b>	
24. Industry	21
<b>Apprentices—</b>	
Field of trade—	
25. Summary of characteristics	21
26. Year of apprenticeship and gender	22
27. Year of apprenticeship and summary of characteristics	22
<b>APPENDIXES</b>	
A Glossary	23
B Explanatory Notes	24
C Technical Note	26
D Populations, variables and order form for special tables	28

**ADDITIONAL DATA ON REQUEST**

The ABS offers a range of unpublished data from this survey upon request.

Appendix D specifies the variables, categories and populations which relate to the survey and includes an order form for special tables.

The population(s) for a particular variable refers to the persons in the survey to whom the variable relates.

## SUMMARY OF FINDINGS

### Overview

In May 1989 there were an estimated 11,093,100 persons aged 15 to 64 years identified as within the scope of the survey. This population estimate may be broken down into the following groupings:

- 2,208,200 persons (20%) who had attended an educational institution in 1988 and the remaining 8,884,900 persons (80%) who did not.
- 1,761,000 persons (16%) who were attending an educational institution in May 1989 and 9,332,100 persons (84%) who were not.
- 4,352,500 persons (39%) who reported having attained a post-school qualification, 6,110,700 (55%) who had left school but had no post-school qualifications and 630,000 persons (6%) who were still attending school in May 1989.

Other features of the May 1989 survey include:

- 335,600 persons (3%) who had left full-time education in the period from the beginning of 1988 up to the time of the survey.
- 175,500 persons (2%) who were classified as apprentices in May 1989.

### May 1984 to May 1989

#### Students aged 15 to 19

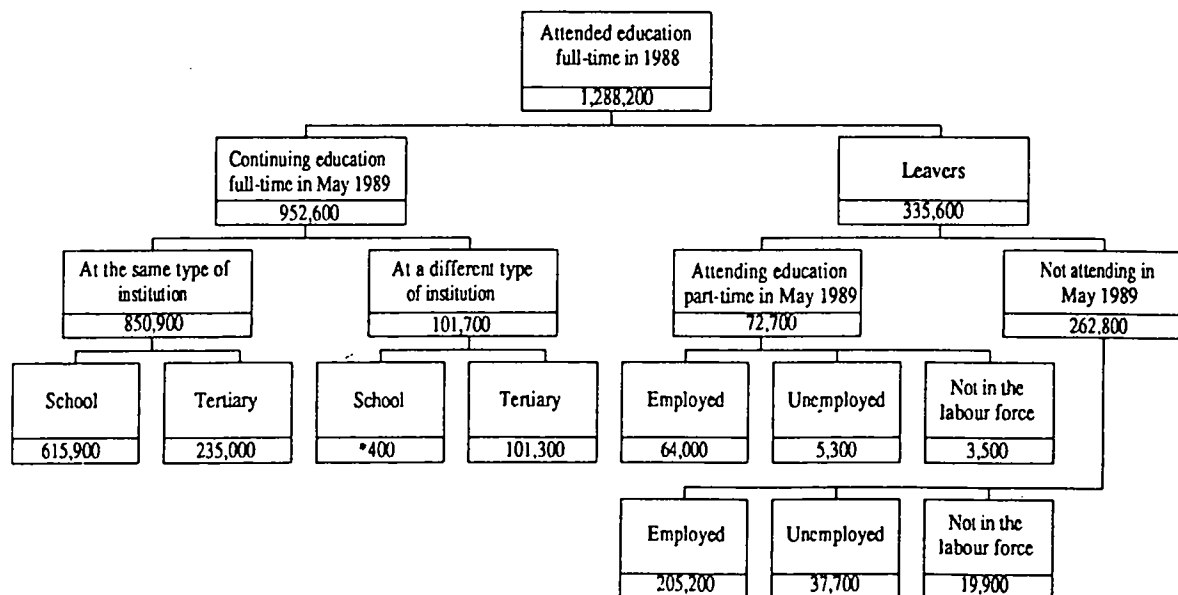
The number of persons aged 15 to 19 who were attending an educational institution full-time at the time of the survey increased by 26% (164,600) between May 1984 and May 1989. This was an increase of 19% (99,900) for persons attending a school full-time and a 56% (64,700) rise for those attending a tertiary institution full-time.

In May 1984 the proportion of the population aged 15 to 19 attending an educational institution full-time was 49.3% and by May 1989 this had risen to 56.6%.

#### Leavers

Estimates of persons who left full-time education in the year prior to the survey have remained relatively constant between 1984 and 1989. However the proportion of those persons who remain unemployed at the time of the survey has dropped from 21% in May 1984 to 13% in May 1989.

DIAGRAM 1. PERSONS WHO ATTENDED AN EDUCATIONAL INSTITUTION FULL-TIME IN 1988:  
SELECTED EDUCATIONAL AND LABOUR FORCE CHARACTERISTICS, MAY 1989



## May 1989

*Where they were in 1988 — What they're doing now.*

There were 1,288,200 persons who attended full-time education at some time in 1988 and 952,600 (74%) of these were still attending full-time education in May 1989.

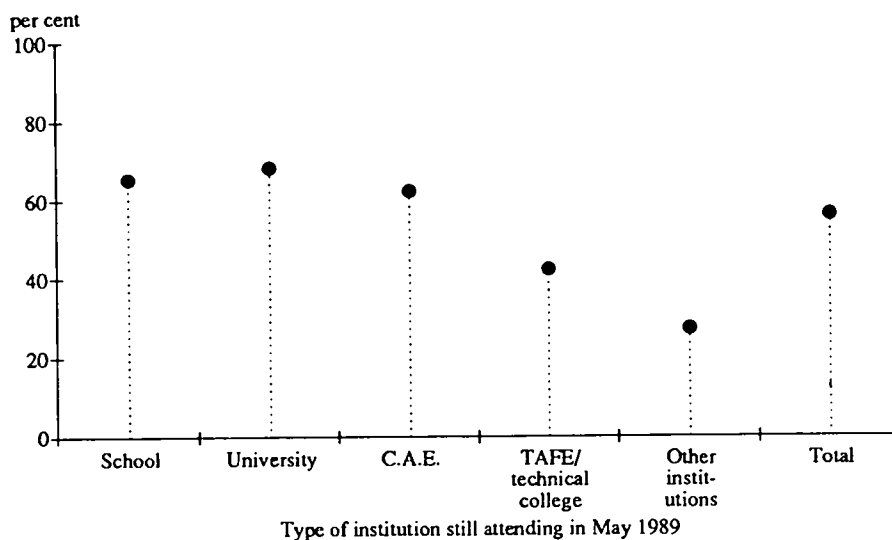
A further 920,000 persons attended part-time at an educational institution during 1988. Of these, 25,000 (3%) were attending full-time in May 1989, 396,400 (43%) were still attending part-time in May 1989 and 498,600 (54%) were not attending any educational institution at all in May 1989.

There were 8,884,900 persons not attending an educational institution in 1988 but by May 1989 some 314,200 (4%) of this group were attending an educational institution — 259,400 (83%) were attending part-time.

The number and percentage of persons continuing on from 1988 at the same type of institution in May 1989 were:

- School 620,900 (66%)
- University 194,800 (69%)
- C.A.E. 125,200 (63%)
- TAFE/technical college 254,100 (43%)
- Other educational institutions 53,500 (28%).

**DIAGRAM 2. PROPORTION OF PERSONS IN MAY 1989 WHO WERE STILL ATTENDING THE SAME TYPE OF EDUCATIONAL INSTITUTION AS IN 1988**



Source : Table 6

Of the estimate of 936,900 persons who attended a school at some time in 1988 there were 316,000 persons who had left school by May 1989. At the time of the survey, 150,600 (48%) of these were attending a tertiary institution. Of those not attending a tertiary institution 126,200 were employed, 25,900 were unemployed and the remaining 13,300 were not in the labour force.

Of the 303,400 persons aged 15 to 24 who left school at some time in the previous year, 222,700 (73%) had last attended a government/state school and 75,100 (25%) a non-government school. Some 99,600 (45%) of those persons from government/state schools went on to attend a tertiary institution in May 1989 compared to 46,100 (61%) from non-government schools.

## Age

- 66% (929,800) of 15 to 19 year olds were attending an educational institution in May 1989 compared to 22% (291,400) of 20 to 24 year olds and 6% (539,800) of 25 to 64 year olds.

- 57% (180,000) of 15 to 19 year olds at a tertiary institution in May 1989 were attending full-time, compared to 53% (153,600) for 20 to 24 year olds and 15% (80,900) for persons aged 25 to 64 years.
- 53% of all persons in the survey attending educational institutions were aged 15 to 19, 17% were aged 20 to 24 and the remaining 31% were aged 25 to 64 years.
- The age breakdown for apprentices in the survey was 71% (123,800) aged 15 to 19, 26% (46,500) aged 20 to 24 and 3% (5,200) were aged 25 to 34 years.

#### Participation in the labour force

Persons attending an educational institution full-time in May 1989 (1,032,400) had a participation rate of 37.3% and an unemployment rate of 16.4%. Those attending part-time (728,600) had a participation rate of 89% and an unemployment rate of 4% — well below the general population's unemployment rate of 6.3% at May 1989.

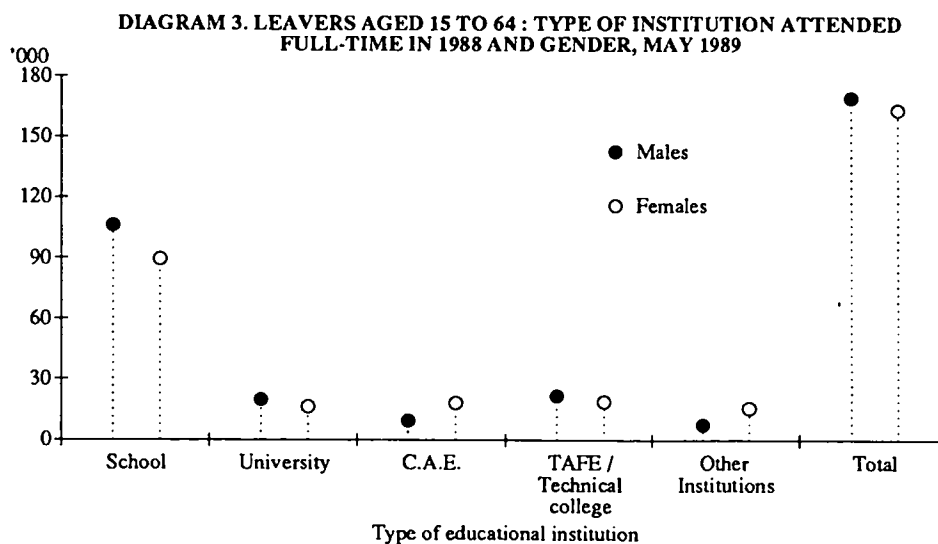
Of the 630,000 persons attending school in May 1989, 166,000 (26%) were also employed — 8,200 of these on a full-time basis.

The participation rate of persons with post-school qualifications was 85.1% in comparison to the 69.4% of persons without post-school qualifications. The respective unemployment rates for the same groups were 3.9% and 7.9%.

#### Educational attainment

In May 1989 4,352,500 persons (39%) aged 15 to 64 reported having attained a post-school qualification, comprising 2,024,800 with a Certificate or diploma, 1,404,200 with a Trade qualification or apprenticeship, 874,000 with a Degree and a further 49,500 with some other type of post-school qualification.

Amongst the 6,110,700 persons who were without a post-school qualification, 687,300 were currently attending a tertiary institution. This figure comprised 437,000 persons who had attended the highest level of secondary school available and 250,300 persons who had not attended the highest level of school available to them.



Source : Table 18

#### Leavers from full-time education

##### All leavers

Of the 335,600 persons who had left full-time education in the previous year 229,200 (68%) left at age 15 to 19, 59,800 (18%) left at age 20 to 24 and 42,200 (13%) left at age 25 to 64 years.

22% (72,700) of leavers continued to attend educational institutions on a part-time basis in May 1989. The majority of these persons (47,000) previously attended school full-time in 1988.

Just over 80% (269,200) of all leavers were employed in May 1989, with the remainder comprising 13% (43,000) unemployed and 7% (23,400) not in the labour force.

### Leavers from school

There were 198,100 persons who had attended school full-time in 1988 and had left full-time education by May 1989. Of these, 158,200 (80%) were employed, 26,400 (13%) were unemployed and 13,500 (7%) were not in the labour force.

### Industry of leavers

The Wholesale and Retail Trade industry group accounted for the largest group of employed leavers in May 1989 with 72,600 (27%) — 57,200 of these coming from schools in 1988. Other industries employing significant numbers of leavers were 43,500 in Community Services (33,700 from tertiary institutions); 40,600 in Finance, Property and Business Services and 39,000 in Manufacturing industries. The industry attracting the smallest number of leavers was Agriculture with 7,800.

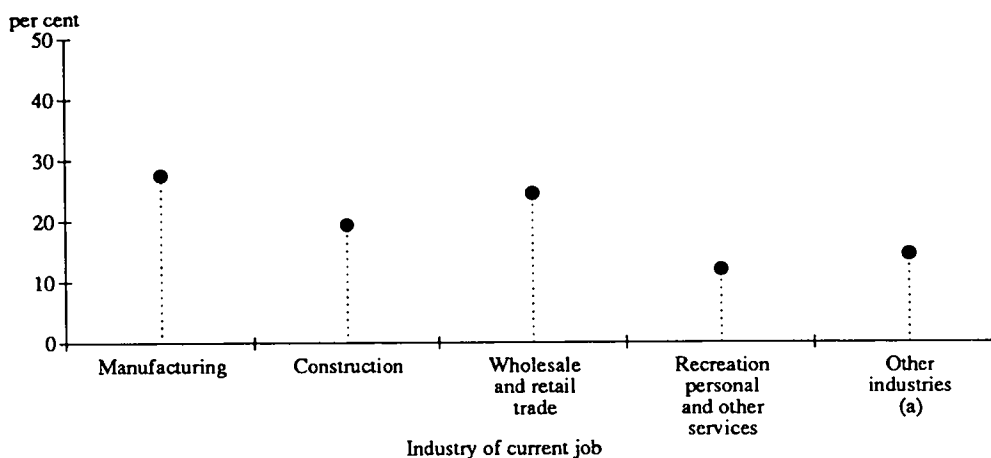
### Occupation of leavers

Three occupation groups each accounted for about 21% of all leavers in May 1989 — Salespersons and Personal Service Workers, (57,100); Clerks (55,500) and Tradespersons (55,300).

Amongst the 110,900 employed persons who had left a tertiary institution almost a third (36,100) had become Managers and Administrators or Professionals.

More than half (82,100) of the employed school leavers were Tradespersons or Salespersons and Personal Service Workers.

DIAGRAM 4. APPRENTICES : INDUSTRY OF CURRENT JOB, MAY 1989



(a) Includes Agriculture, forestry, fishing and hunting; Mining; Electricity, gas and water; Transport and storage; Communication; Finance, property and business services; Community services; and Public administration and defence.

Source : Table 24

### Apprentices

The number of persons who classified themselves as apprentices in May 1989 was 175,500. This is the largest estimate recorded since data on apprentices was first collected in the May 1983 survey. This is an increase of 22,500 since May 1988 — 62% (13,900) of this increase was in the Construction and Wholesale and Retail industries.

Once again the majority (91%) of apprentices were male, and of the 16,600 who were female, 66% (10,900) were apprentice hairdressers.



TABLE 1. PERSONS AGED 15 TO 64 : AGE, WHETHER ATTENDED AN EDUCATIONAL INSTITUTION AND TYPE OF ATTENDANCE IN PREVIOUS YEAR, WHETHER ATTENDING FULL-TIME EDUCATION AND LABOUR FORCE STATUS, MAY 1984 TO MAY 1989 ('000)

	1984	1985	1986	1987	1988	1989
<b>AGED 15 TO 19</b>						
Attended an educational institution in previous year	941.3	985.1	1,020.9	1,061.0	1,093.0	1,114.0
Attended full-time in previous year	848.4	896.2	941.1	973.5	992.1	1,002.6
Attending full-time education in May	622.5	656.2	691.6	744.8	766.1	780.0
Leavers	225.9	240.0	249.5	228.8	226.0	222.6
Employed	162.1	184.0	187.3	171.3	175.2	179.1
Full-time workers	140.3	159.4	165.9	143.6	147.1	152.5
Part-time workers	21.8	24.6	21.4	27.7	28.1	26.6
Unemployed	50.6	45.4	47.7	44.3	37.8	30.2
Not in labour force	13.2	10.7	14.4	13.1	13.0	13.2
Attended part-time in previous year	92.9	89.0	79.8	87.5	100.8	111.4
Attending an educational institution in May	55.7	55.4	47.8	57.0	65.0	66.4
Full-time	*2.4	*1.4	*3.1	*3.4	4.2	*3.4
Part-time	53.3	54.0	44.7	53.5	60.9	62.9
Not attending an educational institution in May	37.2	33.6	32.1	30.5	35.8	45.0
Did not attend an educational institution in previous year	336.6	310.7	308.9	306.4	297.8	290.2
<b>Total</b>	<b>1,277.9</b>	<b>1,295.8</b>	<b>1,329.8</b>	<b>1,367.4</b>	<b>1,390.7</b>	<b>1,404.2</b>
<b>AGED 20 TO 24</b>						
Attended an educational institution in previous year	316.0	319.5	307.4	308.7	330.7	369.0
Attended full-time in previous year	155.3	151.0	147.6	151.4	169.8	193.8
Attending full-time education in May	94.2	87.0	86.7	92.6	104.7	127.1
Leavers	61.1	64.0	60.9	58.8	65.0	66.7
Employed	46.4	46.9	49.7	44.7	56.8	54.9
Full-time workers	39.3	41.3	40.3	38.4	49.0	47.3
Part-time workers	7.1	5.6	9.4	6.3	7.8	7.5
Unemployed	12.0	13.2	8.0	9.6	4.8	8.0
Not in labour force	*2.7	3.9	*3.2	4.5	*3.4	3.8
Attended part-time in previous year	160.7	168.5	159.8	157.2	160.9	175.1
Attending an educational institution in May	83.7	78.4	75.7	76.6	79.6	81.2
Full-time	4.9	5.3	7.0	8.9	8.3	8.9
Part-time	78.8	73.1	68.7	67.8	71.4	72.3
Not attending an educational institution in May	77.0	90.1	84.1	80.6	81.3	93.9
Did not attend an educational institution in previous year	1,003.9	978.4	993.8	995.0	973.8	943.6
<b>Total</b>	<b>1,319.8</b>	<b>1,297.9</b>	<b>1,301.2</b>	<b>1,303.6</b>	<b>1,304.5</b>	<b>1,312.6</b>
<b>AGED 25 TO 64</b>						
Attended an educational institution in previous year	570.8	592.6	667.7	653.1	703.2	725.3
Attended full-time in previous year	65.7	67.8	74.7	76.0	92.5	91.8
Attending full-time education in May	24.6	26.5	28.7	34.3	42.5	45.5
Leavers	41.2	41.3	46.0	41.6	50.0	46.3
Employed	28.6	33.2	36.2	31.6	36.5	35.2
Full-time workers	23.6	27.4	29.7	25.6	26.9	29.8
Part-time workers	5.1	5.9	6.5	6.1	9.6	5.3
Unemployed	5.3	4.1	4.3	5.1	7.0	4.7
Not in labour force	7.2	4.1	5.5	4.9	6.5	6.4
Attended part-time in previous year	505.1	524.8	593.0	577.1	610.7	633.5
Attending an educational institution in May	220.6	220.7	244.1	246.3	253.3	273.8
Full-time	6.9	9.2	7.8	9.3	7.9	12.7
Part-time	213.6	211.5	236.2	237.0	245.4	261.1
Not attending an educational institution in May	284.5	304.0	348.9	330.8	357.4	359.7
Did not attend an educational institution in previous year	6,943.2	7,051.6	7,128.3	7,328.3	7,464.7	7,651.1
<b>Total</b>	<b>7,514.0</b>	<b>7,644.2</b>	<b>7,796.0</b>	<b>7,981.3</b>	<b>8,167.9</b>	<b>8,376.3</b>
<b>TOTAL</b>						
Attended an educational institution in previous year	1,828.1	1,897.1	1,995.9	2,022.7	2,126.8	2,208.2
Attended full-time in previous year	1,069.4	1,114.9	1,163.3	1,200.9	1,254.4	1,288.2
Attending full-time education in May	741.3	769.6	807.0	871.7	913.3	952.6
Leavers	328.1	345.3	356.3	329.2	341.1	335.6
Employed	237.2	264.1	273.3	247.7	268.5	269.2
Full-time workers	203.2	228.1	235.9	207.6	223.0	229.7
Part-time workers	34.0	36.0	37.4	40.1	45.5	39.5
Unemployed	67.8	62.6	60.0	59.1	49.7	43.0
Not in labour force	23.1	18.6	23.1	22.4	22.9	23.4
Attended part-time in previous year	758.7	782.2	832.6	821.8	872.4	920.0
Attending an educational institution in May	359.9	354.4	367.5	379.9	398.0	421.4
Full-time	14.2	15.8	17.8	21.6	20.3	25.0
Part-time	345.7	338.6	349.7	358.3	377.7	396.4
Not attending an educational institution in May	398.8	427.8	465.1	442.0	474.5	498.6
Did not attend an educational institution in previous year	8,283.6	8,340.7	8,431.1	8,629.7	8,736.3	8,884.9
<b>Total</b>	<b>10,111.7</b>	<b>10,237.9</b>	<b>10,427.0</b>	<b>10,652.4</b>	<b>10,863.1</b>	<b>11,093.1</b>

TABLE 2. PERSONS AGED 15 TO 19 : AGE, WHETHER ATTENDING AN EDUCATIONAL INSTITUTION FULL-TIME AND TYPE OF INSTITUTION ATTENDING, MAY 1984 TO MAY 1989

	Males					Females					Persons					Total
	15	16	17	18	19	15	16	17	18	19	15	16	17	18	19	
ATTENDING SCHOOL FULL-TIME																
--'000--																
In May--																
1984	121.7	86.4	42.0	9.5	*1.9	113.4	85.5	43.7	8.1	*2.6	235.0	171.9	85.7	17.6	4.7	514.8
1985	130.8	89.2	45.9	6.9	*3.1	127.6	85.3	46.8	7.7	*1.7	258.4	174.5	92.7	14.6	4.8	545.0
1986	132.5	93.1	49.5	7.6	*3.2	133.0	84.4	49.0	7.6	*1.7	265.5	177.5	98.5	15.3	4.8	561.6
1987	135.3	99.1	60.3	10.6	*1.6	131.8	110.6	55.4	5.9	*1.6	267.2	209.7	115.7	16.5	*3.2	612.3
1988	135.9	104.5	65.4	9.7	*2.0	125.3	111.6	61.4	6.2	*2.1	261.2	216.1	126.8	15.9	4.1	624.1
1989	126.9	100.1	65.6	10.2	*2.1	120.5	105.6	67.4	13.9	*2.4	247.3	205.7	133.0	24.1	4.6	614.7
ATTENDING TERTIARY FULL-TIME																
--'000--																
In May--																
1984	*2.1	4.2	10.5	17.4	16.3	*1.9	7.4	10.7	25.0	19.8	4.1	11.6	21.2	42.4	36.0	115.4
1985	*1.9	4.8	7.8	19.5	16.8	*1.4	6.0	11.5	27.5	22.7	*3.2	10.8	19.3	47.0	39.5	119.8
1986	*1.1	4.8	11.6	26.4	22.4	*1.5	7.3	14.0	30.6	23.6	*2.6	12.1	25.6	57.0	46.0	143.3
1987	*1.2	6.0	13.1	23.4	22.9	*1.6	7.1	15.0	29.3	27.0	*2.7	13.1	28.1	52.8	49.9	146.6
1988	*1.9	5.5	12.3	28.5	23.2	*1.4	7.2	15.1	30.5	33.8	*3.3	12.7	27.4	59.0	57.0	159.3
1989	*0.3	4.0	12.4	33.6	32.4	*1.7	4.8	16.4	38.6	35.8	*2.0	8.8	28.8	72.2	68.3	180.1
NOT ATTENDING AN EDUCATIONAL INSTITUTION FULL-TIME																
--'000--																
In May--																
1984	13.4	46.3	75.1	97.4	104.1	11.4	33.9	67.4	90.9	107.7	24.8	80.3	142.6	188.3	211.8	647.7
1985	13.0	46.0	76.0	94.7	102.6	10.4	35.1	66.2	91.3	95.7	23.5	81.1	142.1	186.0	198.3	631.1
1986	11.9	45.6	75.3	98.3	93.3	10.7	38.1	68.8	90.5	92.4	22.6	83.7	144.1	188.8	185.8	624.9
1987	13.2	46.6	67.7	89.0	103.9	9.5	31.6	63.1	86.3	97.6	22.7	78.2	130.9	175.3	201.5	608.5
1988	12.6	35.3	77.0	96.3	96.3	9.6	29.6	58.4	92.9	99.3	22.2	64.9	135.4	189.3	195.6	607.3
1989	9.7	38.6	70.2	104.2	104.9	7.6	25.4	59.2	92.4	97.1	17.3	64.1	129.4	196.7	202.0	609.4
TOTAL																
--'000--																
In May--																
1984	137.2	137.0	127.6	124.3	122.3	126.7	126.8	121.8	124.0	130.1	263.9	263.8	249.5	248.3	252.5	1,277.9
1985	145.7	140.0	129.7	121.1	122.5	139.4	126.4	124.5	126.4	120.1	285.1	266.4	254.2	247.5	242.6	1,295.8
1986	145.5	143.5	136.5	132.3	118.9	145.2	129.8	131.7	128.7	117.7	290.7	273.3	268.2	261.0	236.6	1,329.8
1987	149.7	151.6	141.1	123.1	128.4	142.9	149.4	133.5	121.5	126.2	292.6	301.0	274.6	244.6	254.6	1,367.4
1988	150.3	145.2	154.7	134.6	121.5	136.4	148.4	135.0	129.5	135.2	286.7	293.6	289.7	264.1	256.7	1,390.7
1989	136.8	142.8	148.1	148.1	139.4	129.8	135.8	143.1	144.9	135.4	266.7	278.6	291.2	293.0	274.8	1,404.2
PROPORTION ATTENDING AN EDUCATIONAL INSTITUTION FULL-TIME																
--per cent--																
In May--																
1984	90.2	66.2	41.1	21.7	14.9	91.0	73.2	44.7	26.6	17.2	90.6	69.6	42.9	24.1	16.1	49.3
1985	91.0	67.1	41.4	21.8	16.2	92.5	72.2	46.9	27.8	20.3	91.8	69.5	44.1	24.9	18.2	51.3
1986	91.8	68.2	44.8	25.7	21.5	92.7	70.6	47.8	29.7	21.5	92.2	69.4	46.3	27.7	21.5	53.0
1987	91.2	69.3	52.0	27.7	19.1	93.4	78.8	52.7	29.0	22.7	92.3	74.0	52.3	28.3	20.9	55.5
1988	91.6	75.7	50.2	28.4	20.8	92.9	80.1	56.7	28.3	26.5	92.3	77.9	53.2	28.3	23.8	56.3
1989	92.9	72.9	52.6	29.6	24.8	94.2	81.3	58.6	36.2	28.3	93.5	77.0	55.6	32.9	26.5	56.6

**TABLE 3. LEAVERS AGED 15 TO 64 : TYPE OF EDUCATIONAL INSTITUTION ATTENDED FULL TIME  
IN PREVIOUS YEAR AND LABOUR FORCE STATUS,  
MAY 1984 TO MAY 1989**

	1984	1985	1986	1987	1988	1989
	--'000--					
Attended school full-time in previous year	188.1	199.1	212.2	194.5	194.6	198.1
Labour force	176.7	190.2	198.8	181.4	183.2	184.7
Employed	133.3	152.2	157.4	141.1	148.6	158.2
Unemployed	43.4	38.0	41.4	40.3	34.7	26.4
Not in labour force	11.4	8.9	13.4	13.2	11.3	13.5
	--per cent--					
Unemployment rate	24.5	20.0	20.8	22.2	18.9	14.3
Participation rate	93.9	95.5	93.7	93.2	94.2	93.2
	--'000--					
Attended tertiary full-time in previous year	140.0	146.1	144.2	134.7	146.5	137.5
Labour force	128.3	136.5	134.5	125.4	134.9	127.5
Employed	103.9	111.9	115.8	106.6	119.9	110.9
Unemployed	24.4	24.5	18.7	18.8	15.0	16.6
Not in labour force	11.7	9.7	9.7	9.3	11.6	9.9
	--per cent--					
Unemployment rate	19.1	18.0	13.9	15.0	11.1	13.0
Participation rate	91.7	93.4	93.3	93.1	92.1	92.8
	--'000--					
<b>Total</b>	<b>328.1</b>	<b>345.3</b>	<b>356.3</b>	<b>329.2</b>	<b>341.1</b>	<b>335.6</b>

**TABLE 4. LEAVERS AGED 15 TO 64 : TYPE OF EDUCATIONAL INSTITUTION ATTENDED FULL-TIME IN PREVIOUS YEAR  
AND WHETHER ATTENDING AN EDUCATIONAL INSTITUTION,  
MAY 1984 TO MAY 1989  
( '000)**

	1984	1985	1986	1987	1988	1989
Attended school full-time in previous year	188.1	199.1	212.2	194.5	194.6	198.1
Attending part-time	34.4	44.1	41.5	40.5	38.9	47.0
Not attending	153.7	155.1	170.7	154.1	155.7	151.1
Attended tertiary full-time in previous year	140.0	146.1	144.2	134.7	146.5	137.5
Attending part-time	32.2	30.7	32.7	26.1	30.9	25.7
Not attending	107.8	115.4	111.5	108.6	115.7	111.8
<b>Total</b>	<b>328.1</b>	<b>345.3</b>	<b>356.3</b>	<b>329.2</b>	<b>341.1</b>	<b>335.6</b>

TABLE 5. PERSONS AGED 15 TO 64 : LABOUR FORCE STATUS, AGE, WHETHER ATTENDED AN EDUCATIONAL INSTITUTION AND TYPE OF ATTENDANCE IN 1988, WHETHER ATTENDING AN EDUCATIONAL INSTITUTION AND TYPE OF ATTENDANCE, MAY 1989

In 1988	In May 1989	Employed			Unem- ployed --'000--	Labour force	Not in labour force	Total	Unem- ployment rate --per cent--	Partici- pation rate cent--
		Full-time	Part-time	Total						
AGED 15 TO 19										
Full-time	Full-time	6.3	213.1	219.4	49.1	268.5	511.5	780.0	18.3	34.4
	Part-time	37.5	9.6	47.0	* 2.1	49.1	* 1.2	50.3	* 4.2	97.5
	Not attending	115.1	17.0	132.1	28.2	160.3	12.0	172.3	17.6	93.0
	Total	158.8	239.7	398.6	79.3	477.9	524.8	1,002.6	16.6	47.7
Part-time	Full-time	* 1.2	* 1.0	* 2.3	* 0.4	* 2.6	* 0.8	* 3.4	* 14.4	* 76.9
	Part-time	57.6	4.3	61.9	* 0.2	62.1	* 0.8	62.9	* 0.4	98.7
	Not attending	36.6	* 3.3	39.9	3.9	43.8	* 1.2	45.0	8.9	97.4
	Total	95.4	8.7	104.1	4.5	108.6	* 2.8	111.4	4.1	97.5
Did not attend	Full-time	* 1.2	* 2.5	3.7	* 1.9	5.5	5.8	11.3	* 34.0	48.9
	Part-time	18.3	* 1.8	20.1	* 1.0	21.1	* 0.7	21.8	* 5.0	96.9
	Not attending	180.2	19.4	199.6	35.7	235.3	21.8	257.1	15.2	91.5
	Total	199.7	23.6	223.4	38.6	262.0	28.2	290.2	14.7	90.3
Total	Full-time	8.7	216.6	225.3	51.4	276.7	518.1	794.8	18.6	34.8
	Part-time	113.3	15.6	129.0	* 3.3	132.3	* 2.8	135.1	* 2.5	98.0
	Not attending	331.9	39.8	371.7	67.7	439.4	34.9	474.4	15.4	92.6
	Total	453.9	272.0	726.0	122.4	848.4	555.8	1,404.2	14.4	60.4
AGED 20 TO 24										
Full-time	Full-time	4.4	48.5	52.9	4.3	57.2	70.0	127.1	7.5	45.0
	Part-time	7.1	* 2.8	9.9	* 1.6	11.5	* 0.8	12.4	* 13.9	93.4
	Not attending	40.2	4.7	44.9	6.4	51.4	* 3.0	54.3	12.5	94.5
	Total	51.7	56.0	107.7	12.3	120.1	73.8	193.8	10.3	61.9
Part-time	Full-time	* 2.6	* 2.4	5.1	* 0.1	5.1	3.7	8.9	* 1.6	58.0
	Part-time	62.8	6.5	69.2	* 2.1	71.3	* 1.0	72.3	* 2.9	98.6
	Not attending	78.5	5.1	83.5	5.7	89.2	4.7	93.9	6.3	95.0
	Total	143.9	14.0	157.9	7.8	165.6	9.5	175.1	4.7	94.6
Did not attend	Full-time	* 2.2	4.6	6.8	* 1.7	8.5	11.0	19.5	* 19.8	43.5
	Part-time	40.9	* 3.3	44.2	* 2.8	47.0	4.2	51.2	* 6.0	91.9
	Not attending	629.2	69.0	698.2	70.2	768.5	104.5	872.9	9.1	88.0
	Total	672.3	76.9	749.3	74.7	824.0	119.6	943.6	9.1	87.3
Total	Full-time	9.2	55.6	64.8	6.0	70.8	84.7	155.5	8.5	45.5
	Part-time	110.8	12.6	123.4	6.5	129.9	6.0	135.9	5.0	95.6
	Not attending	747.9	78.8	826.7	82.3	909.0	112.2	1,021.2	9.1	89.0
	Total	867.9	147.0	1,014.9	94.8	1,109.7	202.9	1,312.6	8.5	84.5
AGED 25 TO 64										
Full-time	Full-time	5.0	13.8	18.8	* 2.0	20.9	24.6	45.5	* 9.6	45.9
	Part-time	5.2	* 1.8	7.0	* 1.6	8.6	* 1.4	10.0	* 18.8	85.8
	Not attending	24.6	3.6	28.2	* 3.1	31.3	4.9	36.3	* 10.0	86.4
	Total	34.9	19.2	54.0	6.8	60.8	31.0	91.8	11.1	66.2
Part-time	Full-time	* 1.7	4.0	5.7	* 1.5	7.2	5.5	12.7	* 20.3	56.8
	Part-time	174.4	39.0	213.4	7.4	220.8	40.3	261.1	3.3	84.6
	Not attending	242.8	61.1	303.9	15.2	319.2	40.6	359.7	4.8	88.7
	Total	419.0	104.1	523.1	24.1	547.1	86.4	633.5	4.4	86.4
Did not attend	Full-time	* 3.3	4.4	7.8	* 2.3	10.0	13.9	24.0	* 22.7	41.9
	Part-time	117.8	32.2	150.0	7.1	157.1	29.3	186.5	4.5	84.3
	Not attending	4,171.2	986.5	5,157.7	259.6	5,417.3	2,023.3	7,440.6	4.8	72.8
	Total	4,292.3	1,023.2	5,315.5	269.0	5,584.5	2,066.6	7,651.1	4.8	73.0
Total	Full-time	10.1	22.3	32.4	5.8	38.1	44.0	82.1	15.1	46.4
	Part-time	297.4	72.9	370.4	16.2	386.5	71.1	457.6	4.2	84.5
	Not attending	4,438.6	1,051.2	5,489.9	277.9	5,767.8	2,068.8	7,836.6	4.8	73.6
	Total	4,746.1	1,146.5	5,892.6	299.8	6,192.4	2,183.9	8,376.3	4.8	73.9
TOTAL										
Full-time	Full-time	15.7	275.4	291.1	55.4	346.5	606.1	952.6	16.0	36.4
	Part-time	49.8	14.2	64.0	5.3	69.3	3.5	72.7	7.6	95.2
	Not attending	179.9	25.3	205.2	37.7	242.9	19.9	262.8	15.5	92.4
	Total	245.4	314.9	560.3	98.4	658.7	629.5	1,288.2	14.9	51.1
Part-time	Full-time	5.6	7.5	13.1	* 1.9	15.0	10.0	25.0	* 12.8	60.0
	Part-time	294.8	49.8	344.5	9.7	354.2	42.2	396.4	2.7	89.3
	Not attending	357.9	69.5	427.4	24.8	452.2	46.4	498.6	5.5	90.7
	Total	658.2	126.8	785.0	36.4	821.4	98.6	920.0	4.4	89.3
Did not attend	Full-time	6.7	11.5	18.2	5.8	24.1	30.7	54.8	24.3	43.9
	Part-time	177.0	37.3	214.3	11.0	225.3	34.2	259.4	4.9	86.8
	Not attending	4,980.6	1,075.0	6,055.6	365.5	6,421.1	2,149.6	8,570.7	5.7	74.9
	Total	5,164.4	1,123.8	6,288.1	382.3	6,670.4	2,214.4	8,884.9	5.7	75.1
Total	Full-time	28.0	294.5	322.4	63.1	385.6	646.8	1,032.4	16.4	37.3
	Part-time	521.6	101.2	622.8	26.0	648.7	79.9	728.6	4.0	89.0
	Not attending	5,518.4	1,169.8	6,688.2	428.0	7,116.2	2,215.9	9,332.1	6.0	76.3
	Total	6,068.0	1,565.5	7,633.4	517.1	8,150.5	2,942.6	11,093.1	6.3	73.5

TABLE 6. PERSONS AGED 15 TO 64 : WHETHER ATTENDING AN EDUCATIONAL INSTITUTION AND TYPE OF INSTITUTION ATTENDING IN MAY 1989, WHETHER ATTENDED AN EDUCATIONAL INSTITUTION IN 1988 AND TYPE OF INSTITUTION ATTENDED, MAY 1989 ('000)

In 1988	Type of institution attending in May 1989						Total	Total	Not attending in May 1989	Total
	School	University	CAE	Tertiary		Other				
				TAFE / Technical college	Other					
Attended	621.5	251.6	162.6	336.0	75.1	825.3	1,446.8	761.5	2,208.2	
School	620.9	42.5	25.6	68.1	14.4	150.6	771.4	165.4	936.9	
Tertiary	* 0.6	209.1	137.1	268.0	60.7	674.7	675.3	596.0	1,271.4	
University	* 0.0	194.8	* 2.9	3.9	* 1.6	203.2	203.2	79.8	283.0	
CAE	* 0.0	5.3	125.2	4.6	* 1.5	136.7	136.7	63.5	200.2	
TAFE/Technical college	* 0.3	5.3	6.5	254.1	4.0	269.8	270.1	327.2	597.2	
Other	* 0.3	3.6	* 2.5	5.4	53.5	65.0	65.4	125.6	190.9	
Did not attend	8.5	43.5	35.1	171.0	56.1	305.7	314.2	8,570.7	8,884.9	
<b>Total</b>	<b>630.0</b>	<b>295.1</b>	<b>197.7</b>	<b>507.1</b>	<b>131.1</b>	<b>1,131.0</b>	<b>1,761.0</b>	<b>9,332.1</b>	<b>11,093.1</b>	

TABLE 7. PERSONS AGED 15 TO 64 : WHETHER ATTENDING AN EDUCATIONAL INSTITUTION, TYPE OF ATTENDANCE, TYPE OF INSTITUTION ATTENDING AND AGE, MAY 1989

Age	Attending full-time					Total	Attending part time	Not attending	Total	Proportion attending full time (per cent)
	School	University	CAE	TAFE/ technical college	Other --'000--					
<b>MALES</b>										
15-19	304.9	34.9	20.4	22.8	4.6	387.6	94.7	233.0	715.3	54.2
15	126.9	* 0.0	* 0.0	* 0.0	* 0.3	127.1	* 1.1	8.7	136.8	92.9
16	100.1	* 0.0	* 0.0	3.7	* 0.3	104.1	11.2	27.5	142.8	72.9
17	65.6	3.6	* 2.5	5.4	* 0.8	78.0	23.5	46.7	148.1	52.6
18	10.2	15.5	9.6	7.1	* 1.4	43.8	30.7	73.5	148.1	29.6
19	* 2.1	15.8	8.3	6.6	* 1.8	34.5	28.3	76.6	139.4	24.8
20-24	* 1.4	41.6	23.7	11.6	* 3.3	81.5	81.8	496.8	660.1	12.4
20	* 1.0	14.0	8.6	4.8	* 0.4	28.7	22.6	84.7	136.0	21.1
21	* 0.2	9.7	5.3	* 2.4	* 0.7	18.4	17.6	96.3	132.3	13.9
22	* 0.3	10.1	5.1	* 2.3	* 0.7	18.4	13.9	97.6	129.9	14.2
23	* 0.0	5.0	4.0	* 1.1	* 0.8	10.9	15.3	103.1	129.2	8.4
24	* 0.0	* 2.9	* 0.6	* 1.0	* 0.6	5.2	12.4	115.1	132.7	3.9
25-64	* 0.5	22.0	8.2	5.6	4.3	40.5	213.8	3,956.9	4,211.3	1.0
<b>Total</b>	<b>306.8</b>	<b>98.4</b>	<b>52.3</b>	<b>40.0</b>	<b>12.1</b>	<b>509.7</b>	<b>390.3</b>	<b>4,686.7</b>	<b>5,586.6</b>	<b>9.1</b>
<b>FEMALES</b>										
15-19	309.8	36.2	30.4	21.0	9.7	407.2	40.4	241.4	688.9	59.1
15	120.5	* 0.0	* 0.0	* 0.9	* 0.9	122.2	* 0.6	7.0	129.8	94.2
16	105.6	* 0.1	* 0.2	* 3.0	* 1.4	110.4	5.6	19.9	135.8	81.3
17	67.4	5.4	4.4	4.8	* 1.9	83.8	8.7	50.6	143.1	58.6
18	13.9	16.2	12.0	7.4	* 3.0	52.5	15.5	76.9	144.9	36.2
19	* 2.4	14.5	13.9	5.0	* 2.4	38.3	10.0	87.0	135.4	28.3
20-24	* 0.5	36.5	23.7	8.3	5.0	74.0	54.1	524.4	652.5	11.3
20	* 0.0	13.2	10.0	* 2.9	* 1.1	27.2	10.9	95.4	133.5	20.4
21	* 0.0	9.9	6.0	* 2.6	* 1.6	20.2	10.2	99.9	130.3	15.5
22	* 0.1	6.8	3.7	* 0.9	* 0.5	12.0	11.2	104.9	128.1	9.4
23	* 0.2	4.0	* 2.7	* 1.0	* 0.9	8.7	11.2	109.3	129.2	6.8
24	* 0.2	* 2.5	* 1.3	* 0.9	* 0.8	5.8	10.7	114.9	131.4	4.4
25-64	* 0.7	14.2	8.1	9.4	9.2	41.6	243.8	3,879.7	4,165.1	1.0
<b>Total</b>	<b>311.0</b>	<b>86.9</b>	<b>62.3</b>	<b>38.7</b>	<b>23.8</b>	<b>522.7</b>	<b>338.3</b>	<b>4,645.5</b>	<b>5,506.5</b>	<b>9.5</b>
<b>PERSONS</b>										
15-19	614.7	71.1	50.8	43.8	14.3	794.8	135.1	474.4	1,404.2	56.6
15	247.3	* 0.0	* 0.0	* 0.9	* 1.1	249.3	* 1.6	15.7	266.7	93.5
16	205.7	* 0.1	* 0.2	6.7	* 1.7	214.5	16.7	47.3	278.6	77.0
17	133.0	9.0	6.9	10.2	* 2.8	161.8	32.2	97.2	291.2	55.6
18	24.1	31.6	21.6	14.5	4.5	96.3	46.2	150.5	293.0	32.9
19	4.6	30.3	22.2	11.6	4.2	72.8	38.3	163.7	274.8	26.5
20-24	* 1.9	78.1	47.4	19.9	8.2	155.5	135.9	1,021.2	1,312.6	11.8
20	* 1.0	27.2	18.6	7.6	* 1.5	55.9	33.5	180.1	269.4	20.8
21	* 0.2	19.6	11.4	5.1	* 2.3	38.6	27.7	196.3	262.6	14.7
22	* 0.4	16.9	8.8	* 3.2	* 1.2	30.4	25.1	202.4	258.0	11.8
23	* 0.2	8.9	6.7	* 2.0	* 1.8	19.6	26.4	212.4	258.4	7.6
24	* 0.2	5.4	* 2.0	* 1.9	* 1.4	11.0	23.1	230.0	264.1	4.1
25-64	* 1.2	36.2	16.3	15.0	13.5	82.1	457.6	7,836.6	8,376.3	1.0
<b>Total</b>	<b>617.8</b>	<b>185.3</b>	<b>114.6</b>	<b>78.7</b>	<b>36.0</b>	<b>1,032.4</b>	<b>728.6</b>	<b>9,332.1</b>	<b>11,093.1</b>	<b>9.3</b>

TABLE 8. PERSONS AGED 15 TO 64 : LABOUR FORCE STATUS, AGE, WHETHER ATTENDING AN EDUCATIONAL INSTITUTION, TYPE OF INSTITUTION ATTENDING AND TYPE OF ATTENDANCE, MAY 1989

Whether attending in May 1989	Type of institution attending in May 1989	Type of attendance in May 1989	Employed			Unemployed --'000--	Labour force	Not in labour force	Total	Unemployment rate --per cent--	Participation rate
			Full-time	Part-time	Total						
AGED 15 TO 19											
Attending	School		* 1.5	155.4	156.8	36.8	193.7	422.5	616.2	19.0	31.4
	Tertiary		120.6	76.9	197.5	17.9	215.3	98.3	313.6	8.3	68.7
		Full-time	8.1	61.7	69.8	14.7	84.5	95.6	180.0	17.4	46.9
		Part-time	112.5	15.2	127.7	* 3.2	130.9	* 2.8	133.6	* 2.4	97.9
	University		5.8	27.0	32.8	5.8	38.6	38.3	76.9	15.1	50.3
		Full-time	* 0.6	26.8	27.5	5.6	33.0	38.0	71.1	16.8	46.5
		Part-time	5.2	* 0.1	5.3	* 0.3	5.6	* 0.2	5.8	* 4.6	96.2
	CAE		3.9	19.7	23.6	4.8	28.4	26.7	55.1	16.9	51.6
		Full-time	* 0.4	19.2	19.6	4.6	24.2	26.7	50.8	18.9	47.5
		Part-time	3.5	* 0.4	4.0	* 0.2	4.2	* 0.0	4.2	* 5.5	100.0
	TAFE/technical college		104.9	24.3	129.2	5.0	134.1	23.8	158.0	3.7	84.9
		Full-time	6.1	12.7	18.7	* 2.8	21.5	22.3	43.8	* 12.9	49.1
		Part-time	98.8	11.6	110.4	* 2.2	112.6	* 1.5	114.1	* 1.9	98.7
	Other		5.9	6.0	11.9	* 2.2	14.1	9.6	23.7	* 15.9	59.7
	Total		122.0	232.3	354.3	54.7	409.0	520.8	929.8	13.4	44.0
		Full-time	8.7	216.6	225.3	51.4	276.7	518.1	794.8	18.6	34.8
		Part-time	113.3	15.6	129.0	* 3.3	132.3	* 2.8	135.1	* 2.5	98.0
Not attending			331.9	39.8	371.7	67.7	439.4	34.9	474.4	15.4	92.6
Total			453.9	272.0	726.0	122.4	848.4	555.8	1,404.2	14.4	60.4
AGED 20 TO 24											
Attending	School		* 1.8	* 1.3	* 3.1	* 0.3	* 3.4	* 0.8	4.1	* 8.5	* 81.4
	Tertiary		118.2	66.9	185.1	12.2	197.3	90.0	287.3	6.2	68.7
		Full-time	8.9	54.8	63.8	5.7	69.5	84.1	153.6	8.3	45.2
		Part-time	109.3	12.1	121.3	6.5	127.8	5.8	133.6	5.1	95.6
	University		17.8	34.6	52.4	* 3.1	55.5	42.6	98.1	* 5.6	56.6
		Full-time	* 3.3	31.2	34.5	* 2.4	36.9	41.2	78.1	* 6.4	47.2
		Part-time	14.5	* 3.4	17.9	* 0.7	18.6	* 1.4	20.0	* 3.9	93.1
	CAE		13.6	21.6	35.3	* 2.6	37.9	25.4	63.3	* 6.9	59.9
		Full-time	* 1.0	19.2	20.2	* 2.1	22.4	25.1	47.4	* 9.5	47.1
		Part-time	12.6	* 2.4	15.0	* 0.5	15.5	* 0.3	15.8	* 3.2	98.1
	TAFE/technical college		75.4	8.8	84.2	5.1	89.3	15.7	105.0	5.7	85.0
		Full-time	* 3.0	3.7	6.7	* 1.0	7.7	12.2	19.9	* 13.6	38.8
		Part-time	72.4	5.1	77.5	4.0	81.5	3.5	85.1	4.9	95.8
	Other		11.4	* 1.9	13.2	* 1.4	14.6	6.3	20.9	* 9.6	70.0
	Total		120.0	68.2	188.2	12.5	200.7	90.7	291.4	6.2	68.9
		Full-time	9.2	55.6	64.8	6.0	70.8	84.7	155.5	8.5	45.5
		Part-time	110.8	12.6	123.4	6.5	129.9	6.0	135.9	5.0	95.6
Not attending			747.9	78.8	826.7	82.3	909.0	112.2	1,021.2	9.1	89.0
Total			867.9	147.0	1,014.9	94.8	1,109.7	202.9	1,312.6	8.5	84.5
AGED 25 TO 64											
Attending	School		4.9	* 1.2	6.1	* 0.7	6.8	* 2.9	9.7	* 10.0	70.2
	Tertiary		302.5	94.1	396.6	21.2	417.8	112.3	530.1	5.1	78.8
		Full-time	9.9	22.3	32.2	5.8	38.0	42.9	80.9	15.2	46.9
		Part-time	292.6	71.8	364.4	15.5	379.9	69.3	449.2	4.1	84.6
	University		65.0	25.2	90.2	* 3.2	93.5	26.6	120.1	* 3.5	77.8
		Full-time	4.0	11.9	15.9	* 1.6	17.5	18.7	36.2	* 9.1	48.4
		Part-time	61.0	13.3	74.3	* 1.6	76.0	7.9	83.9	* 2.2	90.5
	CAE		49.0	13.2	62.2	* 2.8	65.0	14.4	79.4	* 4.3	81.9
		Full-time	* 1.8	4.7	6.5	* 0.9	7.4	8.9	16.3	* 11.9	45.3
		Part-time	47.2	8.6	55.7	* 1.9	57.6	5.5	63.1	* 3.3	91.3
	TAFE/technical college		143.4	39.7	183.1	11.6	194.7	49.4	244.1	6.0	79.7
		Full-time	* 2.1	* 2.1	4.2	* 1.6	5.8	9.2	15.0	* 27.6	38.8
		Part-time	141.3	37.6	178.9	10.0	188.9	40.3	229.1	5.3	82.4
	Other		45.2	15.9	61.1	3.6	64.7	21.8	86.5	5.6	74.8
	Total		307.5	95.2	402.7	21.9	424.6	115.1	539.8	5.2	78.7
		Full-time	10.1	22.3	32.4	5.8	38.1	44.0	82.1	15.1	46.4
		Part-time	297.4	72.9	370.4	16.2	386.5	71.1	457.6	4.2	84.5
Not attending			4,438.6	1,051.2	5,489.9	277.9	5,767.8	2,068.8	7,836.6	4.8	73.6
Total			4,746.1	1,146.5	5,892.6	299.8	6,192.4	2,183.9	8,376.3	4.8	73.9

TABLE 8. PERSONS AGED 15 TO 64 : LABOUR FORCE STATUS, AGE, WHETHER ATTENDING AN EDUCATIONAL INSTITUTION, TYPE OF EDUCATIONAL INSTITUTION ATTENDING AND TYPE OF ATTENDANCE, MAY 1989—continued

Whether attending in May 1989	Type of institution attending in May 1989	Type of attendance in May 1989	Employed			Unemployed --'000--	Labour force	Not in labour force	Total	Unemployment rate --per cent--	Participation rate
			Full-time	Part-time	Total						
MALES											
Attending	School		* 2.9	69.7	72.6	17.5	90.1	220.4	310.5	19.4	29.0
	Tertiary		361.6	79.1	440.7	21.7	462.5	126.9	589.4	4.7	78.5
		Full-time	19.4	56.1	75.5	13.4	88.9	114.0	202.9	15.0	43.8
		Part-time	342.2	23.0	365.2	8.4	373.6	13.0	386.5	2.2	96.6
	University		52.3	35.6	87.9	8.4	96.3	58.3	154.6	8.7	62.3
		Full-time	5.3	31.2	36.5	6.9	43.4	55.0	98.4	15.9	44.1
		Part-time	47.0	4.4	51.4	* 1.5	52.9	* 3.3	56.1	* 2.9	94.2
	CAE		39.4	17.0	56.4	4.7	61.1	31.9	93.0	7.7	65.7
		Full-time	* 2.6	15.4	18.0	3.5	21.5	30.8	52.3	16.1	41.1
		Part-time	36.8	* 1.6	38.4	* 1.2	39.6	* 1.1	40.7	* 3.1	97.3
	TAFE/technical college		234.6	21.6	256.2	6.4	262.6	27.8	290.4	2.4	90.4
		Full-time	9.6	6.5	16.1	* 1.9	18.0	22.0	40.0	* 10.6	45.0
		Part-time	225.0	15.1	240.1	4.5	244.6	5.8	250.4	1.8	97.7
	Other		35.3	5.0	40.2	* 2.3	42.5	9.0	51.4	* 5.3	82.6
	Total		364.5	148.8	513.3	39.3	552.6	347.4	899.9	7.1	61.4
		Full-time	19.7	125.7	145.4	30.5	175.8	333.8	509.7	17.3	34.5
		Part-time	344.9	23.1	367.9	8.8	376.7	13.5	390.3	2.3	96.5
Not attending			3,821.4	163.8	3,985.2	238.0	4,223.2	463.5	4,686.7	5.6	90.1
Total			4,186.0	312.6	4,498.5	277.2	4,775.8	810.8	5,586.6	5.8	85.5
FEMALES											
Attending	School		5.3	88.1	93.4	20.3	113.7	205.8	319.5	17.8	35.6
	Tertiary		179.7	158.7	338.4	29.6	368.0	173.6	541.6	8.0	67.9
		Full-time	7.5	82.7	90.2	12.8	103.0	108.6	211.7	12.4	48.7
		Part-time	172.2	76.0	248.2	16.7	265.0	64.9	329.9	6.3	80.3
	University		36.4	51.2	87.6	3.8	91.3	49.2	140.5	4.1	65.0
		Full-time	* 2.7	38.7	41.4	* 2.6	44.0	42.9	86.9	* 6.0	50.6
		Part-time	33.7	12.5	46.2	* 1.1	47.3	6.3	53.6	* 2.4	88.3
	CAE		27.1	37.6	64.6	5.5	70.2	34.6	104.7	7.9	67.0
		Full-time	* 0.6	27.7	28.3	4.1	32.4	29.8	62.3	12.7	52.1
		Part-time	26.4	9.9	36.3	* 1.4	37.7	4.7	42.5	* 3.8	88.9
	TAFE/technical college		89.0	51.2	140.2	15.2	155.5	61.2	216.7	9.8	71.8
		Full-time	* 1.6	11.9	13.5	3.5	17.1	21.6	38.7	20.6	44.1
		Part-time	87.4	39.3	126.7	11.7	138.4	39.5	178.0	8.5	77.8
	Other		27.2	18.8	46.0	5.0	51.0	28.7	79.7	9.8	64.0
	Total		185.0	246.9	431.9	49.8	481.7	379.3	861.0	10.3	55.9
		Full-time	8.3	168.8	177.0	32.7	209.7	313.0	522.7	15.6	40.1
		Part-time	176.7	78.1	254.8	17.1	272.0	66.3	338.3	6.3	80.4
Not attending			1,697.0	1,006.0	2,703.0	190.0	2,893.0	1,752.4	4,645.5	6.6	62.3
Total			1,882.0	1,252.9	3,134.9	239.9	3,374.7	2,131.8	5,506.5	7.1	61.3
PERSONS											
Attending	School		8.2	157.8	166.0	37.8	203.8	426.2	630.0	18.5	32.4
	Tertiary		541.3	237.8	779.2	51.3	830.5	300.5	1,131.0	6.2	73.4
		Full-time	26.9	138.8	165.8	26.2	191.9	222.6	414.6	13.6	46.3
		Part-time	514.4	99.0	613.4	25.1	638.5	77.9	716.4	3.9	89.1
	University		88.7	86.8	175.5	12.2	187.6	107.5	295.1	6.5	63.6
		Full-time	8.0	69.9	77.9	9.5	87.4	97.9	185.3	10.9	47.2
		Part-time	80.7	16.9	97.6	* 2.6	100.2	9.5	109.7	* 2.6	91.3
	CAE		66.5	54.5	121.0	10.2	131.3	66.5	197.7	7.8	66.4
		Full-time	* 3.2	43.1	46.3	7.6	53.9	60.6	114.6	14.1	47.1
		Part-time	63.3	11.4	74.7	* 2.6	77.3	5.8	83.1	* 3.4	93.0
	TAFE/technical college		323.6	72.8	396.4	21.7	418.1	89.0	507.1	5.2	82.5
		Full-time	11.2	18.4	29.6	5.4	35.0	43.6	78.7	15.5	44.5
		Part-time	312.5	54.3	366.8	16.2	383.0	45.3	428.4	4.2	89.4
	Other		62.5	23.7	86.3	7.3	93.5	37.6	131.1	7.8	71.3
	Total		549.5	395.7	945.2	89.1	1,034.3	726.7	1,761.0	8.6	58.7
		Full-time	28.0	294.5	322.4	63.1	385.6	646.8	1,032.4	16.4	37.3
		Part-time	521.6	101.2	622.8	26.0	648.7	79.9	728.6	4.0	89.0
Not attending			5,518.4	1,169.8	6,688.2	428.0	7,116.2	2,215.9	9,332.1	6.0	76.3
Total			6,068.0	1,565.5	7,633.4	517.1	8,150.5	2,942.6	11,093.1	6.3	73.5

TABLE 9. PERSONS AGED 15 TO 64 : LABOUR FORCE STATUS AND EDUCATIONAL ATTAINMENT, MAY 1989

Educational attainment	Employed			Unem- ployed --'000--	Labour force	Not in labour force	Total	Unem- ployment rate --per cent--	Partici- pation rate
	Full-time	Part-time	Total						
MALES									
With post-school qualifications	2,177.7	85.8	2,263.5	72.4	2,335.9	197.9	2,533.8	3.1	92.2
Degree	471.3	21.6	492.9	11.0	503.9	33.9	537.8	2.2	93.7
Trade qualification or apprenticeship	1,092.1	33.8	1,125.8	35.2	1,161.1	106.2	1,267.3	3.0	91.6
Certificate or diploma	591.2	29.9	621.1	24.8	645.9	54.1	700.0	3.8	92.3
Other	23.1	* 0.6	23.7	* 1.4	25.1	3.7	28.8	* 5.5	87.1
Without post-school qualifications(a)	2,005.3	157.1	2,162.4	187.3	2,349.7	392.5	2,742.2	8.0	85.7
Attended highest level of secondary school available	566.2	74.0	640.2	42.7	683.0	123.1	806.1	6.3	84.7
Attending a tertiary institution in May 1989	81.4	51.4	132.8	13.5	146.3	81.3	227.6	9.2	64.3
Not attending a tertiary institution in May 1989	484.8	22.6	507.4	29.3	536.7	41.9	578.6	5.5	92.8
Did not attend highest level of secondary school available	1,426.3	82.2	1,508.5	143.7	1,652.2	267.2	1,919.4	8.7	86.1
Attending a tertiary institution in May 1989	110.0	9.1	119.1	* 2.6	121.6	14.5	136.2	* 2.1	89.3
Not attending a tertiary institution in May 1989	1,316.3	73.1	1,389.4	141.2	1,530.6	252.7	1,783.2	9.2	85.8
Still at school	* 2.9	69.7	72.6	17.5	90.1	220.4	310.5	19.4	29.0
<b>Total</b>	<b>4,186.0</b>	<b>312.6</b>	<b>4,498.5</b>	<b>277.2</b>	<b>4,775.8</b>	<b>810.8</b>	<b>5,586.6</b>	<b>5.8</b>	<b>85.5</b>
FEMALES									
With post-school qualifications	845.5	450.0	1,295.5	71.9	1,367.5	451.2	1,818.6	5.3	75.2
Degree	195.8	73.5	269.4	8.1	277.4	58.8	336.2	2.9	82.5
Trade qualification or apprenticeship	49.9	30.6	80.4	6.4	86.9	50.1	136.9	7.4	63.4
Certificate or diploma	591.0	342.5	933.5	56.6	990.1	334.6	1,324.8	5.7	74.7
Other	8.8	* 3.4	12.2	* 0.8	13.0	7.7	20.7	* 6.0	62.9
Without post-school qualifications(a)	1,031.2	714.7	1,745.9	147.6	1,893.6	1,474.8	3,368.4	7.8	56.2
Attended highest level of secondary school available	322.4	197.6	519.9	41.3	561.2	305.7	866.9	7.4	64.7
Attending a tertiary institution in May 1989	39.3	75.4	114.7	11.6	126.3	83.1	209.4	9.1	60.3
Not attending a tertiary institution in May 1989	283.0	122.1	405.2	29.7	434.9	222.5	657.5	6.8	66.2
Did not attend highest level of secondary school available	700.6	511.5	1,212.1	105.1	1,317.2	1,161.5	2,478.7	8.0	53.1
Attending a tertiary institution in May 1989	37.3	27.6	65.0	7.5	72.5	41.7	114.1	10.4	63.5
Not attending a tertiary institution in May 1989	663.3	483.9	1,147.2	97.5	1,244.7	1,119.8	2,364.5	7.8	52.6
Still at school	5.3	88.1	93.4	20.3	113.7	205.8	319.5	17.8	35.6
<b>Total</b>	<b>1,882.0</b>	<b>1,252.9</b>	<b>3,134.9</b>	<b>239.9</b>	<b>3,374.7</b>	<b>2,131.8</b>	<b>5,506.5</b>	<b>7.1</b>	<b>61.3</b>
PERSONS									
With post-school qualifications	3,023.2	535.9	3,559.1	144.3	3,703.4	649.1	4,352.5	3.9	85.1
Degree	667.1	95.1	762.2	19.1	781.3	92.7	874.0	2.4	89.4
Trade qualification or apprenticeship	1,141.9	64.3	1,206.3	41.7	1,247.9	156.2	1,404.2	3.3	88.9
Certificate or diploma	1,182.2	372.4	1,554.6	81.4	1,636.0	388.7	2,024.8	5.0	80.8
Other	31.9	4.0	35.9	* 2.2	38.1	11.4	49.5	* 5.6	77.0
Without post-school qualifications(a)	3,036.5	871.8	3,908.3	335.0	4,243.3	1,867.4	6,110.7	7.9	69.4
Attended highest level of secondary school available	888.6	271.6	1,160.2	84.0	1,244.2	428.8	1,673.0	6.8	74.4
Attending a tertiary institution in May 1989	120.7	126.8	247.6	25.0	272.6	164.4	437.0	9.2	62.4
Not attending a tertiary institution in May 1989	767.8	144.8	912.6	59.0	971.6	264.4	1,236.0	6.1	78.6
Did not attend highest level of secondary school available	2,126.9	593.7	2,720.6	248.8	2,969.4	1,428.7	4,398.1	8.4	67.5
Attending a tertiary institution in May 1989	147.3	36.7	184.0	10.1	194.1	56.2	250.3	5.2	77.6
Not attending a tertiary institution in May 1989	1,979.6	557.0	2,536.6	238.7	2,775.3	1,372.5	4,147.8	8.6	66.9
Still at school	8.2	157.8	166.0	37.8	203.8	426.2	630.0	18.5	32.4
<b>Total</b>	<b>6,068.0</b>	<b>1,565.5</b>	<b>7,633.4</b>	<b>517.1</b>	<b>8,150.5</b>	<b>2,942.6</b>	<b>11,093.1</b>	<b>6.3</b>	<b>73.5</b>

(a) Includes persons who never attended school and those for whom secondary school qualifications could not be determined.



TABLE 10. PERSONS AGED 15 TO 64 WHO ATTENDED SCHOOL IN 1988 : LABOUR FORCE STATUS, TYPE OF ATTENDANCE AT SCHOOL IN 1988, WHETHER ATTENDING AN EDUCATIONAL INSTITUTION, TYPE OF INSTITUTION ATTENDING, AND TYPE OF ATTENDANCE, MAY 1989

Type of attendance at school in 1988	Whether attending in May 1989	Type of educational institution attending in May 1989	Type of attendance in May 1989	Employed			Unemployed --'000--	Labour force	Not in labour force	Total	Unemployment rate (percent)
				Full-time	Part-time	Total					
Full-time											
Attending	School	Full-time		37.8	195.5	233.3	48.2	281.5	482.8	764.3	17.1
				* 0.6	155.4	156.0	37.0	193.0	422.9	615.9	19.2
				* 0.3	* 0.4	* 0.7	* 0.1	* 0.8	* 0.1	* 1.0	* 18.0
	Tertiary	Full-time		* 1.0	155.8	156.7	37.1	193.8	423.1	616.9	19.2
				* 2.1	31.3	33.4	9.4	42.8	58.5	101.3	22.0
		Part-time		34.8	8.4	43.2	* 1.6	44.8	* 1.2	46.1	* 3.6
			Total	36.9	39.7	76.6	11.0	87.6	59.8	147.4	12.6
Not attending			99.3	15.0	114.4	24.6	139.0	12.1	151.1	17.7	
Total			137.1	210.5	347.7	72.8	420.5	494.9	915.4	17.3	
Part-time											
Attending			* 3.4	* 1.3	4.7	* 0.1	4.9	* 2.2	7.1	* 2.8	
Not attending			8.1	3.7	11.9	* 1.2	13.1	* 1.3	14.4	* 9.5	
Total			11.5	5.1	16.6	* 1.4	18.0	3.5	21.5	* 7.7	
Total											
Attending	School	Full-time		41.2	196.8	238.1	48.3	286.4	485.1	771.4	16.9
				* 0.6	155.6	156.3	37.0	193.2	422.9	616.2	19.1
				* 2.7	* 1.0	3.7	* 0.3	4.0	* 0.7	4.7	* 7.1
	Tertiary	Full-time		* 3.3	156.6	160.0	37.3	197.2	423.6	620.9	18.9
				* 2.1	31.5	33.5	9.4	43.0	59.0	102.0	21.9
		Part-time		35.8	8.7	44.5	* 1.6	46.2	* 2.5	48.6	* 3.5
			Total	37.9	40.2	78.1	11.0	89.1	61.4	150.6	12.4
Not attending			107.4	18.8	126.2	25.9	152.1	13.3	165.4	17.0	
Total			148.7	215.6	364.3	74.2	438.5	498.4	936.9	16.9	

TABLE 11. PERSONS AGED 15 TO 64 WHO ATTENDED A TERTIARY INSTITUTION IN 1988: LABOUR FORCE STATUS, TYPE OF TERTIARY ATTENDANCE IN 1988, WHETHER ATTENDING AN EDUCATIONAL INSTITUTION, TYPE OF INSTITUTION ATTENDING, AND TYPE OF ATTENDANCE, MAY 1989

Type of tertiary attendance in 1988	Whether attending in May 1989	Type of educational institution attending in May 1989	Type of attendance in May 1989	Employed			Unemployed --'000--	Labour force	Not in labour force	Total	Unemployment rate (percent)
				Full-time	Part-time	Total					
Full-time											
Attending(a)	Tertiary	Full-time		27.7	94.1	121.8	12.5	134.3	126.7	261.0	9.3
				13.0	88.7	101.7	9.0	110.7	124.3	235.0	8.1
				14.6	5.3	20.0	3.5	23.5	* 2.1	25.6	15.0
	Total		27.7	94.0	121.7	12.5	134.2	126.4	260.6	9.3	
		Not attending		80.6	10.3	90.9	13.1	103.9	7.8	111.8	12.6
Total			108.3	104.4	212.7	25.6	238.3	134.6	372.8	10.7	
Part-time											
Attending(a)	Tertiary	Full-time		296.9	55.9	352.8	11.5	364.3	50.0	414.3	3.1
				5.6	7.1	12.7	* 1.9	14.6	9.5	24.1	* 13.2
				291.4	48.6	340.0	9.5	349.5	40.5	390.0	2.7
	Total		296.9	55.7	352.7	11.5	364.1	50.0	414.1	3.1	
Not attending			349.8	65.8	415.5	23.5	439.1	45.2	484.2	5.4	
Total			646.7	121.7	768.4	35.0	803.4	95.2	898.5	4.4	
Total											
Attending(a)	Tertiary	Full-time		324.6	150.0	474.7	24.0	498.6	176.7	675.3	4.8
				18.6	95.8	114.4	10.9	125.3	133.9	259.2	8.7
				306.0	54.0	360.0	13.0	373.0	42.6	415.6	3.5
	Total		324.6	149.8	474.4	24.0	498.3	176.4	674.7	4.8	
		Not attending		430.4	76.0	506.4	36.6	543.0	53.0	596.0	6.7
Total			755.0	226.1	981.1	60.6	1,041.6	229.7	1,271.4	5.8	

(a) Includes a small number of persons who were attending school in May 1989.

TABLE 12. PERSONS AGED 15 TO 64 WHO ATTENDED A TERTIARY INSTITUTION IN 1988 : AGE, STATUS OF CURRENT STUDY ARRANGEMENTS AND EDUCATIONAL ATTAINMENT, MAY 1989  
(\*000)

	Age group								
	15 to 19			20 to 24			25 to 64		
	Males	Females	Persons	Males	Females	Persons	Males	Females	Persons
Attended full-time in 1988	45.2	51.6	96.8	93.8	92.4	186.2	45.3	44.6	89.9
Still attending full-time in May 1989(a)	33.1	35.2	68.3	62.7	59.4	122.0	24.7	20.0	44.7
With post-school qualifications	* 1.4	* 2.1	* 3.4	10.4	10.9	21.3	16.6	11.5	28.1
Without post-school qualifications	31.7	33.1	64.9	52.2	48.5	100.7	8.1	8.5	16.6
Leavers	12.1	16.4	28.5	31.1	33.0	64.1	20.6	24.6	45.2
Still attending part-time in May 1989	* 1.7	* 2.0	3.7	6.2	5.7	12.0	4.7	5.2	9.9
With post-school qualifications	* 0.3	* 0.8	* 1.1	* 1.8	* 2.8	4.7	* 3.1	* 3.4	6.5
Without post-school qualifications	* 1.4	* 1.3	* 2.7	4.4	* 2.9	7.3	* 1.6	* 1.8	* 3.4
Not attending a tertiary institution in May 1989(a)	10.4	14.4	24.7	24.8	27.3	52.2	15.9	19.4	35.3
With post-school qualifications(b)	* 2.7	10.7	13.4	15.6	21.5	37.1	13.2	15.1	28.3
Degree	* 0.0	* 0.1	* 0.1	10.0	9.9	19.9	5.2	4.7	9.9
Trade qualification or apprenticeship	* 0.5	* 0.3	* 0.8	* 1.8	* 0.4	* 2.2	3.5	* 0.9	4.3
Certificate or diploma	* 1.9	10.3	12.2	3.8	11.2	15.0	4.6	9.5	14.1
Without post-school qualifications	7.6	3.6	11.2	9.3	5.9	15.1	* 2.3	4.3	6.6
Attended part-time in 1988	74.3	32.1	106.4	109.3	62.7	172.0	292.9	327.2	620.1
Attending full-time in May 1989	* 1.4	* 1.4	* 2.8	6.0	* 2.7	8.7	5.2	7.4	12.7
Attending part-time in May 1989	51.2	11.3	62.5	49.9	21.0	70.9	123.6	132.9	256.6
Not attending tertiary in May 1989	21.8	19.3	41.1	53.5	39.0	92.5	164.0	186.8	350.8
<b>Total</b>	<b>119.5</b>	<b>83.7</b>	<b>203.2</b>	<b>203.1</b>	<b>155.1</b>	<b>358.2</b>	<b>338.2</b>	<b>371.8</b>	<b>710.0</b>

(a) May include a small number of persons now attending school. (b) Includes persons with other post-school qualifications.

TABLE 13. PERSONS AGED 15 TO 64 WHO ATTENDED A TERTIARY INSTITUTION IN 1988 : LABOUR FORCE STATUS, STATUS OF CURRENT STUDY ARRANGEMENTS AND EDUCATIONAL ATTAINMENT, MAY 1989  
(\*000)

	Employed			Unem- ployed	Labour force	Not in labour force	Males	Females	Persons
	Full-time	Part-time	Total						
Attended full-time in 1988	108.3	104.4	212.7	25.6	238.3	134.6	184.2	188.6	372.8
Still attending full-time in May 1989(a)	13.0	88.7	101.7	9.0	110.7	124.3	120.5	114.5	235.0
With post-school qualifications	5.8	17.8	23.6	* 1.5	25.0	27.8	28.4	24.5	52.9
Without post-school qualifications	7.2	70.9	78.1	7.5	85.7	96.5	92.1	90.1	182.2
Leavers	95.2	15.7	110.9	16.6	127.5	10.3	63.7	74.1	137.8
Still attending part-time in May 1989	14.6	5.3	20.0	3.5	23.5	* 2.1	12.6	13.0	25.6
With post-school qualifications	7.9	* 2.0	9.9	* 1.2	11.1	* 1.1	5.2	7.0	12.2
Without post-school qualifications	6.8	* 3.3	10.1	* 2.3	12.4	* 1.0	7.4	6.0	13.4
Not attending a tertiary institution in May 1989(a)	80.6	10.4	91.0	13.1	104.0	8.2	51.1	61.1	112.2
With post-school qualifications(b)	58.6	6.7	65.4	8.6	74.0	4.8	31.5	47.3	78.8
Degree	23.7	* 2.3	26.0	* 2.3	28.2	* 1.6	15.2	14.7	29.9
Trade qualification or apprenticeship	5.3	* 0.3	5.6	* 0.8	6.4	* 0.9	5.7	* 1.6	7.3
Certificate or diploma	29.7	4.2	33.8	5.3	39.1	* 2.2	10.3	31.0	41.3
Without post-school qualifications	22.0	3.5	25.5	4.5	29.9	* 3.0	19.2	13.8	33.0
Attended part-time in 1988	646.7	121.7	768.4	35.0	803.4	95.2	476.5	422.0	898.5
Attending full-time in May 1989	5.6	7.1	12.7	* 1.9	14.6	9.5	12.6	11.5	24.1
Attending part-time in May 1989	291.4	48.6	340.0	9.5	349.5	40.5	224.7	165.3	390.0
Not attending tertiary in May 1989	349.8	65.9	415.7	23.5	439.2	45.2	239.2	245.2	484.4
<b>Total</b>	<b>755.0</b>	<b>226.1</b>	<b>981.1</b>	<b>60.6</b>	<b>1,041.6</b>	<b>229.7</b>	<b>660.8</b>	<b>610.6</b>	<b>1,271.4</b>

(a) May include a small number of persons now attending school. (b) Includes persons with other post-school qualifications.

TABLE 14. PERSONS AGED 15 TO 24 WHO ATTENDED SCHOOL IN 1988 BUT WERE NOT ATTENDING SCHOOL IN MAY 1989:  
TYPE OF SCHOOL LAST ATTENDED, WHETHER ATTENDING A TERTIARY INSTITUTION, TYPE OF TERTIARY  
INSTITUTION ATTENDING AND TYPE OF ATTENDANCE, MAY 1989

Whether attending in May 1989	Type of educational institution attending in May 1989	Type of attendance in May 1989	Government/State school	Non-government school --'000--	Total(a)	Government/State school	Non-government school -- per cent--	Total
<b>MALES</b>								
Attending	University		10.2	10.2	20.4	8.7	27.7	13.2
		Full-time	8.9	9.9	18.9	7.7	27.0	12.2
		Part-time	* 1.2	* 0.2	* 1.5	* 1.1	* 0.6	* 1.0
	CAE		7.5	* 2.8	10.4	6.5	* 7.8	6.7
		Full-time	7.2	* 2.5	9.7	6.2	* 6.9	6.3
		Part-time	* 0.4	* 0.3	* 0.7	* 0.3	* 0.9	* 0.4
	TAFE/technical college		30.8	8.3	39.6	26.5	22.6	25.6
		Full-time	9.6	4.1	14.0	8.3	11.2	9.0
		Part-time	21.2	4.2	25.6	18.2	11.5	16.5
	Other		* 2.5	* 1.5	4.3	* 2.1	* 4.0	2.8
		Full-time	* 1.3	* 1.0	* 2.6	* 1.1	* 2.7	* 1.7
		Part-time	* 1.2	* 0.5	* 1.7	* 1.0	* 1.3	* 1.1
	Total		50.9	22.8	74.7	43.8	62.1	48.2
		Full-time	27.0	17.5	45.2	23.2	47.8	29.2
		Part-time	24.0	5.3	29.5	20.6	14.3	19.0
Not attending			65.3	13.9	80.1	56.2	37.9	51.8
<b>Total</b>			<b>116.3</b>	<b>36.7</b>	<b>154.8</b>	<b>100.0</b>	<b>100.0</b>	<b>100.0</b>
<b>FEMALES</b>								
Attending	University		12.0	9.4	21.8	11.2	24.6	14.7
		Full-time	11.3	9.1	20.8	10.6	23.6	14.0
		Part-time	* 0.6	* 0.4	* 1.0	* 0.6	* 1.0	* 0.7
	CAE		9.6	5.1	14.9	9.0	13.2	10.0
		Full-time	9.6	5.1	14.9	9.0	13.2	10.0
		Part-time	* 0.0	* 0.0	* 0.0	* 0.0	* 0.0	* 0.0
	TAFE/technical college		20.4	5.8	26.9	19.1	15.1	18.1
		Full-time	10.7	* 3.0	14.0	10.1	* 7.7	9.4
		Part-time	9.6	* 2.8	12.9	9.0	* 7.4	8.7
	Other		6.8	* 3.0	9.9	6.3	* 7.8	6.7
		Full-time	4.2	* 2.5	6.7	3.9	* 6.6	4.5
		Part-time	* 2.6	* 0.5	* 3.2	* 2.4	* 1.3	* 2.2
	Total		48.7	23.3	73.6	45.7	60.6	49.5
		Full-time	35.8	19.6	56.4	33.7	51.0	38.0
		Part-time	12.8	3.7	17.1	12.1	9.6	11.5
Not attending			57.8	15.1	75.0	54.3	39.4	50.5
<b>Total</b>			<b>106.4</b>	<b>38.4</b>	<b>148.5</b>	<b>100.0</b>	<b>100.0</b>	<b>100.0</b>
<b>PERSONS</b>								
Attending	University		22.1	19.6	42.3	9.9	26.1	13.9
		Full-time	20.2	19.0	39.8	9.1	25.3	13.1
		Part-time	* 1.9	* 0.6	* 2.5	* 0.8	* 0.8	* 0.8
	CAE		17.1	7.9	25.3	7.7	10.5	8.3
		Full-time	16.7	7.6	24.6	7.5	10.1	8.1
		Part-time	* 0.4	* 0.3	* 0.7	* 0.2	* 0.4	* 0.2
	TAFE/technical college		51.1	14.1	66.5	23.0	18.8	21.9
		Full-time	20.4	7.1	28.0	9.1	9.4	9.2
		Part-time	30.8	7.0	38.5	13.8	9.4	12.7
	Other		9.2	4.5	14.2	4.2	6.0	4.7
		Full-time	5.5	3.5	9.3	2.5	4.7	3.1
		Part-time	3.8	* 1.0	4.9	1.7	* 1.3	1.6
	Total		99.6	46.1	148.3	44.7	61.3	48.9
		Full-time	62.8	37.1	101.7	28.2	49.4	33.5
		Part-time	36.8	8.9	46.6	16.5	11.9	15.4
Not attending			123.1	29.0	155.1	55.3	38.7	51.1
<b>Total</b>			<b>222.7</b>	<b>75.1</b>	<b>303.4</b>	<b>100.0</b>	<b>100.0</b>	<b>100.0</b>

(a) Includes 5,500 persons who were not asked the type of school they last attended.

TABLE 15. PERSONS AGED 15 TO 24 WHO ATTENDED SCHOOL IN 1988 BUT WERE NOT ATTENDING SCHOOL IN MAY 1989 : LABOUR FORCE STATUS, WHETHER ATTENDING A TERTIARY INSTITUTION, TYPE OF ATTENDANCE AND TYPE OF SCHOOL LAST ATTENDED, MAY 1989

Type of school last attended	Employed			Unem- ployed --'000--	Labour force	Not in labour force	Total	Unem- ployment rate --per cent--	Partici- pation rate
	Full-time	Part-time	Total						
ATTENDING TERTIARY FULL-TIME									
Males									
Government/State	* 1.4	6.8	8.2	* 1.9	10.1	16.9	27.0	* 18.9	37.3
Non-government	* 0.4	6.3	6.6	* 2.5	9.1	8.5	17.5	* 27.1	51.8
Total(a)	* 1.8	13.3	15.0	4.4	19.4	25.8	45.2	22.5	42.9
Females									
Government/State	* 0.1	9.9	10.0	* 3.1	13.0	22.8	35.8	* 23.4	36.4
Non-government	* 0.0	8.2	8.2	* 2.0	10.2	9.4	19.6	* 19.7	52.1
Total(a)	* 0.3	18.2	18.5	5.1	23.6	32.9	56.4	21.5	41.7
Persons									
Government/State	* 1.5	16.6	18.1	5.0	23.1	39.7	62.8	21.5	36.8
Non-government	* 0.4	14.5	14.8	4.5	19.3	17.9	37.1	23.2	51.9
Total(a)	* 2.1	31.5	33.5	9.4	43.0	58.7	101.7	21.9	42.3
ATTENDING TERTIARY PART-TIME									
Males									
Government/State	20.7	* 3.0	23.6	* 0.2	23.9	* 0.1	24.0	* 1.0	99.5
Non-government	4.3	* 0.8	5.1	* 0.1	5.3	* 0.0	5.3	* 2.0	100.0
Total(a)	25.2	3.8	29.0	* 0.3	29.4	* 0.1	29.5	* 1.1	99.6
Females									
Government/State	7.3	4.1	11.4	* 0.8	12.2	* 0.6	12.8	* 6.3	95.0
Non-government	* 2.2	* 0.5	* 2.7	* 0.5	* 3.2	* 0.5	3.7	* 16.0	* 86.9
Total(a)	10.1	4.6	14.7	* 1.3	16.0	* 1.1	17.1	* 8.0	93.4
Persons									
Government/State	28.0	7.0	35.0	* 1.0	36.0	* 0.8	36.8	* 2.8	97.9
Non-government	6.5	* 1.4	7.8	* 0.6	8.5	* 0.5	8.9	* 7.3	94.6
Total(a)	35.3	8.4	43.7	* 1.6	45.3	* 1.2	46.6	* 3.6	97.3
NOT ATTENDING TERTIARY									
Males									
Government/State	44.4	4.2	48.6	12.2	60.8	4.6	65.3	20.1	93.0
Non-government	11.1	* 1.2	12.3	* 0.7	13.1	* 0.8	13.9	* 5.7	93.9
Total(a)	55.7	5.9	61.6	13.1	74.7	5.4	80.1	17.5	93.2
Females									
Government/State	32.8	8.3	41.1	11.2	52.3	5.4	57.8	21.4	90.6
Non-government	11.9	* 1.6	13.5	* 1.0	14.5	* 0.7	15.1	* 6.8	95.7
Total(a)	46.1	10.3	56.4	12.3	68.7	6.2	75.0	18.0	91.7
Persons									
Government/State	77.2	12.5	89.7	23.4	113.1	10.0	123.1	20.7	91.9
Non-government	23.0	* 2.8	25.8	* 1.7	27.5	* 1.5	29.0	* 6.3	94.8
Total(a)	101.9	16.1	118.0	25.4	143.4	11.7	155.1	17.7	92.5
TOTAL									
Males									
Government/State	66.5	13.9	80.4	14.3	94.7	21.6	116.3	15.1	81.4
Non-government	15.8	8.3	24.1	* 3.3	27.4	9.3	36.7	* 12.1	74.7
Total(a)	82.7	23.0	105.7	17.8	123.5	31.4	154.8	14.4	79.7
Females									
Government/State	40.3	22.3	62.5	15.0	77.6	28.9	106.4	19.4	72.9
Non-government	14.1	10.3	24.4	3.5	27.9	10.5	38.4	12.5	72.6
Total(a)	56.5	33.1	89.6	18.7	108.3	40.2	148.5	17.3	72.9
Persons									
Government/State	106.7	36.2	142.9	29.4	172.2	50.5	222.7	17.0	77.3
Non-government	29.9	18.6	48.5	6.8	55.3	19.8	75.1	12.3	73.6
Total(a)	139.2	56.0	195.2	36.5	231.7	71.6	303.4	15.7	76.4

(a) Includes 5,500 persons who were not asked the type of school they last attended.

TABLE 16. PERSONS AGED 15 TO 24 WHO ATTENDED AN EDUCATIONAL INSTITUTION FULL-TIME IN 1988 : TYPE OF EDUCATIONAL INSTITUTION ATTENDED FULL-TIME IN 1988, WHETHER ATTENDING FULL-TIME EDUCATION AND WHETHER ATTENDING SAME TYPE OF EDUCATIONAL INSTITUTION AS IN 1988, MAY 1989

Type of institution attended full-time in 1988	Attending full-time education		Total	Leavers	Leavers as a proportion of total (per cent)	Total ('000)
	Same type of institution as in 1988	Different type of institution than in 1988 --'000--				
<b>MALES</b>						
School	305.9	44.8	350.6	106.6	23.3	457.2
Tertiary	91.2	4.6	95.8	43.1	31.1	138.9
University	48.9	* 0.7	49.6	14.2	22.2	63.8
CAE	27.9	* 0.9	28.9	7.4	20.4	36.2
TAFE/technical college	12.2	* 2.4	14.6	18.0	55.3	32.6
Other	* 2.2	* 0.5	* 2.7	3.6	56.8	6.3
<b>Total</b>	<b>397.0</b>	<b>49.4</b>	<b>446.4</b>	<b>149.8</b>	<b>25.1</b>	<b>596.2</b>
<b>FEMALES</b>						
School	309.9	56.3	366.2	90.1	19.7	456.3
Tertiary	89.2	5.4	94.5	49.5	34.3	144.0
University	46.2	* 2.0	48.2	13.0	21.3	61.2
CAE	31.3	* 1.5	32.8	12.7	27.9	45.5
TAFE/technical college	7.5	* 1.5	9.0	14.4	61.5	23.4
Other	4.2	* 0.4	4.6	9.3	66.9	13.9
<b>Total</b>	<b>399.1</b>	<b>61.7</b>	<b>460.8</b>	<b>139.5</b>	<b>23.2</b>	<b>600.3</b>
<b>PERSONS</b>						
School	615.8	101.1	716.8	196.7	21.5	913.5
Tertiary	180.4	9.9	190.3	92.6	32.7	282.9
University	95.1	* 2.7	97.8	27.2	21.8	125.0
CAE	59.2	* 2.4	61.6	20.1	24.6	81.7
TAFE/technical college	19.6	4.0	23.6	32.4	57.9	56.0
Other	6.4	* 0.9	7.3	12.9	63.7	20.2
<b>Total</b>	<b>796.2</b>	<b>111.0</b>	<b>907.2</b>	<b>289.3</b>	<b>24.2</b>	<b>1,196.5</b>

TABLE 17. LEAVERS AGED 15 TO 64 : TYPE OF EDUCATIONAL INSTITUTION ATTENDED FULL-TIME IN 1988, AGE AT TIME OF LEAVING FULL-TIME EDUCATION AND WHETHER ATTENDING AN EDUCATIONAL INSTITUTION, MAY 1989 ('000)

	Attended school in 1988			Attended tertiary in 1988			Total		
	Males	Females	Persons	Males	Females	Persons	Males	Females	Persons
Age at time of leaving full-time education --									
14 and under	* 2.7	* 1.7	4.4	* 0.0	* 0.0	* 0.0	* 2.7	* 1.7	4.4
15-19	103.3	88.1	191.4	16.9	20.9	37.8	120.2	109.0	229.2
15	17.4	14.4	31.8	* 0.1	* 0.5	* 0.6	17.5	14.9	32.4
16	32.3	25.8	58.2	* 2.1	* 1.2	* 3.3	34.4	27.0	61.4
17	35.6	31.6	67.2	* 3.1	* 3.3	6.4	38.7	34.9	73.6
18	15.7	14.4	30.2	5.5	7.8	13.4	21.3	22.3	43.5
19	* 2.1	* 1.9	4.0	6.1	8.0	14.2	8.3	9.9	18.2
20-24	* 1.1	* 0.5	* 1.6	28.0	30.2	58.3	29.1	30.7	59.8
25-64	* 0.3	* 0.5	* 0.8	18.4	23.0	41.4	18.7	23.5	42.2
Whether attending in May 1989 --									
Attending	29.0	18.1	47.0	12.7	13.0	25.7	41.7	31.0	72.7
Not attending	78.4	72.7	151.1	50.7	61.1	111.8	129.1	133.8	262.8
<b>Total</b>	<b>107.4</b>	<b>90.7</b>	<b>198.1</b>	<b>63.4</b>	<b>74.1</b>	<b>137.5</b>	<b>170.8</b>	<b>164.8</b>	<b>335.6</b>

TABLE 18. LEAVERS AGED 15 TO 64 : AGE AND TYPE OF EDUCATIONAL INSTITUTION ATTENDED  
FULL-TIME IN 1988, MAY 1989  
(<sup>'000</sup>)

Type of institution attended full-time in 1988	Aged 15 to 19			Aged 20 to 24			Total(a)		
	Males	Females	Persons	Males	Females	Persons	Males	Females	Persons
	School	105.1	89.0	194.1	* 1.5	* 1.1	* 2.6	107.4	90.7
Tertiary	12.1	16.4	28.5	31.1	33.0	64.1	63.4	74.1	137.5
University	* 2.0	* 1.0	* 3.1	12.1	12.0	24.1	21.0	17.7	38.6
CAE	* 0.8	* 2.0	* 2.8	6.5	10.7	17.3	10.7	19.4	30.1
TAFE/technical college	7.8	7.6	15.4	10.2	6.8	17.0	23.0	20.2	43.2
Other	* 1.3	5.9	7.2	* 2.3	3.5	5.7	8.7	16.9	25.5
<b>Total</b>	<b>117.2</b>	<b>105.4</b>	<b>222.6</b>	<b>32.6</b>	<b>34.1</b>	<b>66.7</b>	<b>170.8</b>	<b>164.8</b>	<b>335.6</b>

(a) Includes leavers aged 25 to 64.

TABLE 19. LEAVERS AGED 15 TO 64 : LABOUR FORCE STATUS, AGE AND TYPE OF EDUCATIONAL INSTITUTION ATTENDED  
FULL-TIME IN 1988, MAY 1989

Type of institution attended full-time in 1988	Employed			Unem- ployed --'000--	Labour force	Not in labour force	Total	Unem- ployment rate --per cent--	Partici- pation rate
	Full-time	Part-time	Total						
	AGED 15 TO 19								
School	131.7	23.8	155.5	26.2	181.7	12.4	194.1	14.4	93.6
Tertiary	20.8	* 2.8	23.7	4.0	27.6	* 0.8	28.5	14.4	97.1
<b>Total</b>	<b>152.5</b>	<b>26.6</b>	<b>179.1</b>	<b>30.2</b>	<b>209.4</b>	<b>13.2</b>	<b>222.6</b>	<b>14.4</b>	<b>94.1</b>
AGED 20 TO 24									
School	* 2.2	* 0.0	* 2.2	* 0.2	* 2.3	* 0.2	* 2.6	* 7.1	* 90.9
Tertiary	45.2	7.5	52.7	7.9	60.6	3.6	64.1	13.0	94.4
University	17.0	* 2.9	19.8	* 2.2	22.0	* 2.1	24.1	* 10.0	91.3
CAE	13.1	* 2.5	15.6	* 1.5	17.0	* 0.2	17.3	* 8.5	98.7
TAFE/technical college	10.8	* 1.5	12.2	3.6	15.8	* 1.2	17.0	22.6	92.8
Other	4.4	* 0.7	5.1	* 0.6	5.7	* 0.0	5.7	* 11.2	100.0
<b>Total</b>	<b>47.3</b>	<b>7.5</b>	<b>54.9</b>	<b>8.0</b>	<b>62.9</b>	<b>3.8</b>	<b>66.7</b>	<b>12.8</b>	<b>94.3</b>
AGED 25 TO 64									
Tertiary	29.2	5.3	34.6	4.7	39.3	5.6	44.9	12.0	87.6
University	8.3	* 1.4	9.8	* 0.8	10.6	* 0.9	11.4	* 7.9	92.5
CAE	6.0	* 1.2	7.2	* 1.3	8.4	* 1.6	10.1	* 14.9	84.0
TAFE/technical college	7.3	* 1.5	8.8	* 1.0	9.9	* 0.9	10.7	* 10.2	91.7
Other	7.7	* 1.1	8.8	* 1.6	10.4	* 2.2	12.6	* 15.6	82.6
<b>Total(a)</b>	<b>29.8</b>	<b>5.3</b>	<b>35.2</b>	<b>4.7</b>	<b>39.9</b>	<b>6.4</b>	<b>46.3</b>	<b>11.9</b>	<b>86.3</b>
TOTAL									
School	134.5	23.8	158.2	26.4	184.7	13.5	198.1	14.3	93.2
Tertiary	95.2	15.7	110.9	16.6	127.5	9.9	137.5	13.0	92.8
University	26.9	5.1	31.9	3.6	35.5	* 3.1	38.6	10.1	91.9
CAE	21.2	4.4	25.6	* 2.7	28.3	* 1.8	30.1	* 9.6	93.9
TAFE/technical college	29.8	4.1	33.9	6.5	40.4	* 2.8	43.2	16.0	93.6
Other	17.4	* 2.1	19.5	3.8	23.3	* 2.2	25.5	16.5	91.4
<b>Total</b>	<b>229.7</b>	<b>39.5</b>	<b>269.2</b>	<b>43.0</b>	<b>312.2</b>	<b>23.4</b>	<b>335.6</b>	<b>13.8</b>	<b>93.0</b>

(a) Includes a small number of leavers from school.

TABLE 20. LEAVERS AGED 15 TO 64 : AGE, TYPE OF EDUCATIONAL INSTITUTION ATTENDED FULL-TIME IN 1988  
AND TIME OF LEAVING FULL-TIME EDUCATION, MAY 1989  
(\*000)

Time of leaving full-time education	Aged 15 to 19			Aged 20 to 24			Total(a)		
	Males	Females	Persons	Males	Females	Persons	Males	Females	Persons
ATTENDED SCHOOL IN 1988									
January - June 1988	12.3	11.7	24.0	* 0.5	* 0.3	* 0.7	13.1	11.9	25.0
July - October 1988	9.0	7.5	16.5	* 0.0	* 0.0	* 0.0	9.0	7.9	16.9
November 1988	42.6	33.9	76.5	* 0.8	* 0.6	* 1.5	43.8	34.7	78.4
December 1988	31.7	28.8	60.4	* 0.2	* 0.0	* 0.2	31.9	28.9	60.8
January - May 1989	9.5	7.2	16.7	* 0.0	* 0.2	* 0.2	9.5	7.4	16.9
<b>Total</b>	<b>105.1</b>	<b>89.0</b>	<b>194.1</b>	<b>* 1.5</b>	<b>* 1.1</b>	<b>* 2.6</b>	<b>107.4</b>	<b>90.7</b>	<b>198.1</b>
ATTENDED TERTIARY IN 1988									
January - June 1988	* 2.6	* 1.6	4.2	4.5	* 1.9	6.4	9.8	4.8	14.6
July - October 1988	* 1.8	* 2.9	4.7	* 3.3	* 3.3	6.6	9.3	10.3	19.6
November 1988	5.2	7.6	12.8	15.3	19.2	34.4	28.3	38.3	66.6
December 1988	* 1.3	3.6	4.9	7.5	7.3	14.8	13.1	17.3	30.4
January - May 1989	* 1.2	* 0.8	* 1.9	* 0.5	* 1.4	* 1.9	* 3.0	* 3.4	6.3
<b>Total</b>	<b>12.1</b>	<b>16.4</b>	<b>28.5</b>	<b>31.1</b>	<b>33.0</b>	<b>64.1</b>	<b>63.4</b>	<b>74.1</b>	<b>137.5</b>
TOTAL									
January - June 1988	14.9	13.2	28.1	5.0	* 2.2	7.2	22.9	16.7	39.6
July - October 1988	10.8	10.4	21.3	* 3.3	* 3.3	6.6	18.3	18.2	36.5
November 1988	47.8	41.5	89.3	16.1	19.8	35.9	72.1	73.0	145.0
December 1988	33.0	32.3	65.3	7.7	7.3	15.0	45.0	46.2	91.2
January - May 1989	10.7	7.9	18.6	* 0.5	* 1.6	* 2.1	12.5	10.7	23.2
<b>Total</b>	<b>117.2</b>	<b>105.4</b>	<b>222.6</b>	<b>32.6</b>	<b>34.1</b>	<b>66.7</b>	<b>170.8</b>	<b>164.8</b>	<b>335.6</b>

(a) Includes leavers aged 25 to 64.

TABLE 21. LEAVERS AGED 15 TO 64 : AGE AND LABOUR FORCE STATUS, MAY 1989

Labour force status	Aged 15 to 19			Aged 20 to 24			Total(a)		
	Males	Females	Persons	Males	Females	Persons	Males	Females	Persons
--'000--									
Labour force	111.6	97.7	209.4	31.2	31.7	62.9	161.6	150.6	312.2
Employed	97.1	82.0	179.1	27.7	27.2	54.9	141.4	127.7	269.2
Full-time workers	87.4	65.2	152.5	25.8	21.5	47.3	129.3	100.4	229.7
Part-time workers	9.7	16.9	26.6	* 1.9	5.7	7.5	12.1	27.4	39.5
Unemployed	14.5	15.7	30.2	3.5	4.5	8.0	20.2	22.9	43.0
Not in labour force	5.5	7.7	13.2	* 1.4	* 2.4	3.8	9.2	14.2	23.4
<b>Total</b>	<b>117.2</b>	<b>105.4</b>	<b>222.6</b>	<b>32.6</b>	<b>34.1</b>	<b>66.7</b>	<b>170.8</b>	<b>164.8</b>	<b>335.6</b>
--per cent--									
Unemployment rate	13.0	16.1	14.4	11.2	14.3	12.8	12.5	15.2	13.8
Participation rate	95.3	92.7	94.1	95.7	93.0	94.3	94.6	91.4	93.0

(a) Includes leavers aged 25 to 64.

TABLE 22. EMPLOYED LEAVERS AGED 15 TO 64 : TYPE OF EDUCATIONAL INSTITUTION ATTENDED FULL-TIME IN 1988, INDUSTRY AND WHETHER FULL-TIME OR PART-TIME WORKERS, MAY 1989 ('000)

	Attended school in 1988			Attended tertiary in 1988			Total		
	Males	Females	Persons	Males	Females	Persons	Males	Females	Persons
<i>Industry--</i>									
Agriculture, forestry, fishing and hunting	3.5	* 1.6	5.1	* 1.7	* 1.0	* 2.7	5.2	* 2.6	7.8
Manufacturing	23.0	4.3	27.3	8.8	* 2.9	11.7	31.7	7.3	39.0
Construction	11.4	* 1.1	12.5	5.4	* 0.8	6.1	16.7	* 1.9	18.6
Wholesale and retail trade	28.8	28.4	57.2	7.6	7.8	15.4	36.4	36.2	72.6
Transport and storage	4.5	* 1.4	5.9	* 2.7	* 1.1	3.9	7.2	* 2.5	9.8
Finance, property and business services	8.2	13.5	21.7	8.4	10.5	18.9	16.6	24.0	40.6
Community services	* 2.3	7.6	9.8	10.3	23.4	33.7	12.5	30.9	43.5
Recreation, personal and other services	4.3	8.4	12.7	* 3.4	5.8	9.2	7.7	14.2	21.9
Other(a)	* 3.1	* 2.9	6.0	4.2	5.1	9.3	7.3	8.0	15.4
<i>Full-time and part-time workers--</i>									
Full-time workers	79.8	54.6	134.5	49.5	45.7	95.2	129.3	100.4	229.7
Part-time workers	9.2	14.6	23.8	* 2.9	12.8	15.7	12.1	27.4	39.5
<b>Total</b>	<b>89.0</b>	<b>69.2</b>	<b>158.2</b>	<b>52.4</b>	<b>58.5</b>	<b>110.9</b>	<b>141.4</b>	<b>127.7</b>	<b>269.2</b>

(a) Includes Mining; Electricity, gas and water; Communication; and Public administration and defence.

TABLE 23. EMPLOYED LEAVERS AGED 15 TO 64 : TYPE OF EDUCATIONAL INSTITUTION ATTENDED FULL-TIME IN 1988 AND OCCUPATION, MAY 1989 ('000)

Occupation	Attended school in 1988			Attended tertiary in 1988			Total		
	Males	Females	Persons	Males	Females	Persons	Males	Females	Persons
Managers and administrators; professionals	* 2.4	* 0.6	* 3.1	17.3	18.7	36.1	19.7	19.4	39.1
Para-professionals	* 1.6	* 2.0	3.7	4.5	5.7	10.1	6.1	7.7	13.8
Tradespersons	34.2	6.2	40.3	13.6	* 1.4	15.0	47.7	7.6	55.3
Clerks	11.2	22.3	33.5	4.8	17.2	22.0	16.0	39.6	55.5
Salespersons and personal service workers	12.1	29.8	41.8	4.0	11.3	15.3	16.1	41.1	57.1
Plant and machine operators, and drivers	* 2.8	* 1.2	4.0	* 2.3	* 0.2	* 2.5	5.1	* 1.4	6.5
Labourers and related workers	24.8	7.1	31.9	6.0	4.0	9.9	30.7	11.1	41.8
<b>Total</b>	<b>89.0</b>	<b>69.2</b>	<b>158.2</b>	<b>52.4</b>	<b>58.5</b>	<b>110.9</b>	<b>141.4</b>	<b>127.7</b>	<b>269.2</b>



TABLE 24. APPRENTICES : INDUSTRY, MAY 1984 TO MAY 1989  
( '000)

Industry	1984	1985	1986	1987	1988	1989
Manufacturing	46.9	48.3	32.3	38.3	44.1	49.0
Construction	21.6	23.1	24.6	27.7	27.1	34.8
Wholesale and retail trade	28.5	29.6	31.6	30.5	37.5	43.7
Recreation, personal and other services	17.2	19.1	21.3	19.1	20.1	21.7
Other(a)	28.4	27.7	24.7	24.1	24.2	26.2
<b>Total</b>	<b>142.6</b>	<b>147.8</b>	<b>134.5</b>	<b>139.7</b>	<b>153.0</b>	<b>175.5</b>

(a) Includes Agriculture, forestry, fishing and hunting; Mining; Electricity, gas and water; Transport and storage; Communication; Finance, property and business services; Community services; and Public administration and defence.

TABLE 25. APPRENTICES : FIELD OF TRADE BY SUMMARY OF CHARACTERISTICS, MAY 1989  
( '000)

	<i>Metal fitting and machining; other metal</i>	<i>Electrical and electronics</i>	<i>Building</i>	<i>Vehicle</i>	<i>Food</i>	<i>Hair- dressing</i>	<i>Other</i>	<i>Total</i>
<b>Age--</b>								
15 - 19	28.7	17.2	23.0	20.0	9.7	9.7	15.4	123.8
15 - 17	11.4	5.0	10.2	7.8	4.1	5.7	4.1	48.3
18	9.3	6.0	7.2	7.0	3.6	* 2.5	6.5	42.2
19	7.9	6.2	5.5	5.2	* 2.1	* 1.6	4.9	33.3
20 - 24	7.8	7.0	7.1	9.6	* 3.3	* 2.3	9.4	46.5
25 - 34	* 1.4	* 1.3	* 0.6	* 0.4	* 0.3	* 0.0	* 1.2	5.2
<b>Birthplace--</b>								
Born in Australia	35.8	22.9	28.2	28.0	11.7	11.0	23.9	161.5
Born outside Australia	* 2.1	* 2.7	* 2.4	* 2.0	* 1.6	* 1.0	* 2.2	14.0
<b>Whether attended an educational institution and type of institution attended in 1988--</b>								
Attended	32.2	20.9	23.8	25.2	9.7	9.4	17.7	138.9
School	7.4	5.1	7.0	5.9	* 2.7	3.6	4.9	36.7
Tertiary	24.7	15.8	16.8	19.3	7.0	5.8	12.7	102.2
Did not attend	5.8	4.7	6.8	4.7	3.6	* 2.6	8.4	36.6
<b>Age at time of leaving full-time education--</b>								
Attending full-time in May 1989	* 1.7	* 1.0	* 1.5	* 1.4	* 0.6	* 0.3	* 1.2	7.7
Not attending full-time in May 1989	34.9	23.2	28.5	28.2	12.4	11.7	23.7	162.6
Left when aged --								
15 - 19	34.3	23.1	27.3	27.4	12.1	10.9	23.7	158.8
15	6.3	* 3.4	7.3	4.7	* 2.9	* 2.9	4.2	31.8
16	16.4	7.8	10.2	11.9	6.4	6.2	9.8	68.8
17 - 19	11.6	11.9	9.8	10.8	* 2.7	* 1.8	9.6	58.3
Other(a)	* 0.5	* 0.1	* 1.2	* 0.8	* 0.4	* 0.8	* 0.0	3.8
Not asked(b)	* 1.4	* 1.3	* 0.6	* 0.4	* 0.3	* 0.0	* 1.2	5.2
<b>Type of school last attended--</b>								
Government/State	31.5	21.3	24.8	26.1	10.1	9.9	18.8	142.3
Non-government	5.1	* 2.9	5.2	* 3.2	* 3.0	* 2.1	5.7	27.2
Not asked(c)	* 1.4	* 1.4	* 0.6	* 0.6	* 0.3	* 0.0	* 1.7	5.9
<b>Industry--</b>								
Manufacturing	26.9	4.2	* 2.9	* 0.8	* 1.2	* 0.0	13.0	49.0
Construction	* 0.9	9.5	22.7	* 0.1	* 0.0	* 0.0	* 1.6	34.8
Wholesale and retail trade	* 3.3	4.1	* 0.4	26.2	5.1	* 0.0	4.5	43.7
Recreation, personal and other services	* 0.3	* 0.1	* 0.0	* 0.0	6.6	12.0	* 2.8	21.7
Other(d)	6.6	7.6	4.6	* 2.8	* 0.4	* 0.0	4.2	26.2
<b>Sector--</b>								
Public	5.3	7.3	* 2.1	* 1.7	* 0.0	* 0.0	* 2.4	18.8
Private(e)	32.7	18.3	28.5	28.2	13.3	12.0	23.7	156.7
<b>Total</b>	<b>37.9</b>	<b>25.6</b>	<b>30.6</b>	<b>29.9</b>	<b>13.3</b>	<b>12.0</b>	<b>26.1</b>	<b>175.5</b>

(a) Comprises persons who left school at age 10 to 14 or 20 to 34. (b) Persons aged 25 to 34 who were not full-time students in 1988 were not asked the age at which they left full-time education. (c) Comprises persons aged 25 to 34 and persons who had never attended school. (d) Includes Agriculture, forestry, fishing and hunting; Mining; Electricity, gas and water; Transport and storage; Communication; Finance, property and business services; Community services; and Public administration and defence. (e) Includes a small number of persons for whom sector could not be determined.

TABLE 26. APPRENTICES : YEAR OF APPRENTICESHIP AND FIELD OF TRADE, MAY 1989 ('000)

Field of trade	First	Second	Third	Fourth(a)	Total
MALES					
Metal fitting and machining; other metal	10.9	10.7	8.4	7.5	37.5
Electrical and electronics	7.6	7.7	5.5	4.1	25.0
Building	10.4	8.5	5.2	5.8	29.9
Vehicle	8.1	8.2	7.0	6.5	29.8
Food	* 3.1	* 2.5	3.6	* 2.7	11.9
Hairdressing	* 0.2	* 0.4	* 0.2	* 0.3	* 1.1
Other	8.9	5.4	3.8	5.6	23.7
<b>Total</b>	<b>49.3</b>	<b>43.3</b>	<b>33.7</b>	<b>32.5</b>	<b>158.9</b>
PERSONS(b)					
Metal fitting and machining; other metal	11.2	10.9	8.4	7.5	37.9
Electrical and electronics	7.6	7.7	6.2	4.1	25.6
Building	10.7	8.8	5.4	5.8	30.6
Vehicle	8.3	8.2	7.0	6.5	29.9
Food	4.0	* 2.8	3.6	* 2.9	13.3
Hairdressing(c)	4.6	* 2.6	* 2.6	* 2.1	12.0
Other	9.8	6.6	3.9	5.8	26.1
<b>Total</b>	<b>56.1</b>	<b>47.6</b>	<b>37.0</b>	<b>34.8</b>	<b>175.5</b>

(a) Includes a small number of fifth year apprentices. (b) Includes 16,600 females. (c) Includes a total of 10,900 females.

TABLE 27. APPRENTICES : YEAR OF APPRENTICESHIP BY SUMMARY OF CHARACTERISTICS, MAY 1989 ('000)

	First	Second	Third	Fourth(a)	Total
<b>State--</b>					
N.S.W.	19.9	18.7	12.0	11.7	62.3
Vic.	15.7	14.3	10.2	12.0	52.3
Qld	8.2	3.9	5.0	4.7	21.7
S.A.	3.8	4.1	3.5	* 2.8	14.3
W.A.	6.0	* 3.4	* 3.2	* 2.1	14.7
Tas.	* 1.6	* 1.8	* 1.1	* 0.8	5.4
N.T.	* 0.5	* 0.6	* 0.8	* 0.3	* 2.3
A.C.T.	* 0.4	* 0.7	* 1.1	* 0.4	* 2.5
<b>Age--</b>					
15 - 19	47.9	40.2	25.1	10.6	123.8
15 - 17	31.0	15.1	* 2.2	* 0.0	48.3
18	12.4	16.8	11.1	* 2.0	42.2
19	4.5	8.3	11.9	8.6	33.3
20 - 24	5.7	6.0	11.1	23.7	46.5
25 - 34	* 2.4	* 1.4	* 0.8	* 0.5	5.2
<b>Birthplace--</b>					
Born in Australia	50.9	45.2	33.4	31.9	161.5
Born outside Australia	5.2	* 2.3	3.6	* 2.9	14.0
<b>Whether attended an educational institution and type of institution attended in 1988--</b>					
Attended	39.5	40.6	29.8	29.0	138.9
School	34.8	* 2.0	* 0.0	* 0.0	36.7
Tertiary	4.7	38.7	29.8	29.0	102.2
Did not attend	16.5	7.0	7.3	5.8	36.6
<b>Age at time of leaving full-time education--</b>					
Attending full-time in May 1989	* 1.7	3.5	* 1.6	* 0.8	7.7
Not attending full-time in May 1989	51.9	42.6	34.6	33.5	162.6
Left when aged --					
15 - 19	51.3	42.0	33.5	32.0	158.8
15	10.0	9.9	6.3	5.5	31.8
16	21.2	16.8	14.0	16.8	68.8
17 - 19	20.1	15.3	13.2	9.7	58.3
Other(b)	* 0.6	* 0.7	* 1.0	* 1.5	3.8
Not asked(c)	* 2.4	* 1.4	* 0.8	* 0.5	5.2
<b>Type of school last attended--</b>					
Government/State	45.5	38.8	29.8	28.3	142.3
Non-government	7.5	7.3	6.4	6.0	27.2
Not asked(d)	* 3.1	* 1.5	* 0.8	* 0.5	5.9
<b>Industry--</b>					
Manufacturing	16.6	13.3	11.0	8.0	49.0
Construction	12.7	8.6	6.2	7.3	34.8
Wholesale and retail trade	11.9	11.7	10.0	10.0	43.7
Recreation, personal and other services	7.7	5.4	4.4	4.2	21.7
Other(e)	7.1	8.5	5.4	5.2	26.2
<b>Sector--</b>					
Public	5.3	5.5	4.2	3.8	18.8
Private(f)	50.8	42.0	32.9	31.0	156.7
<b>Total</b>	<b>56.1</b>	<b>47.6</b>	<b>37.0</b>	<b>34.8</b>	<b>175.5</b>

(a) Includes a small number of fifth year apprentices. (b) Comprises persons who left school at age 10 to 14 or 20 to 34. (c) Persons aged 25 to 34 who were not full-time students in 1988 were not asked the age at which they left full-time education. (d) Comprises persons aged 25 to 34 and persons who had never attended school. (e) Includes Agriculture, forestry, fishing and hunting; Mining; Electricity, gas and water; Transport and storage; Communication; Finance, property and business services; Community services; and Public administration and defence. (f) Includes a small number of persons for whom sector could not be determined.

## APPENDIX A

## GLOSSARY

*Apprentices:* employed persons aged 15 to 34 who indicated in the survey that they were apprentices.

*Attended an educational institution in the previous year:* any period of study during that calendar year.

*CAE:* college of advanced education.

*Certificate or diploma:* completion of an approved certificate or diploma in secretarial or business studies, administration, teaching, nursing, etc.

*Degree:* a bachelor degree (including honours), a graduate or post-graduate diploma, masters degree or a doctorate.

*Educational attainment:* measures the highest qualification obtained by the respondent. Qualifications may include those obtained at other than educational institutions (e.g. nursing qualifications obtained at a hospital).

*Educational institution:* any institution whose primary role is education. Included are schools, universities, colleges of advanced education, colleges of technical and further education, public and private colleges, etc. Excluded are institutions whose primary role is not education, for example hospitals.

*Field of trade:* derived from information provided by apprentices on their occupation. (See paragraph 12 of Appendix B - Explanatory Notes.)

*Full-time attendance:* persons who consider themselves to be attending full-time, or the institution which they are attending so classifies them.

*Highest level of secondary school available:* the highest level of secondary schooling (or equivalent) offered by the education system at the time the respondent left school.

*Leavers:* persons who were full-time students at any time in the previous calendar year but were not full-time students at the time of the survey. It should be noted that 6.9 per cent of leavers left full-time education during the period January 1989 through to the survey date. Also, 101,400 persons who attended school full time at some

time in the previous year and left, but were attending full-time education at any tertiary institution at the time of the survey are not included in the definition of leavers. Information about this group can be obtained from Table 10.

*Other educational institution:* attendance at other educational institutions include business, commercial and secretarial colleges; religious and theological colleges; and overseas institutions.

*Other post-school qualifications:* completion of other types of education, e.g. adult education, preparatory/bridging course or hobby course.

*Part-time attendance:* persons who consider themselves to be attending part time, or the institution which they are attending so classifies them.

*Post-school qualifications:* qualifications held by those persons who had left school and answered 'Yes' to the question: 'Since leaving school have you obtained a trade qualification, certificate, diploma, degree or any other qualification?'. Respondents indicated which of the following groups best described their highest qualification: Degree; Trade qualification or apprenticeship; Certificate or diploma; Other post-school qualification.

*Still at school:* current school attendance was recorded only for persons aged fifteen to twenty years.

*TAFE:* college of technical and further education.

*Tertiary institution:* any educational institution other than a school.

*Trade qualification or apprenticeship:* completion of an approved trade/technical apprenticeship in fitting and turning, hairdressing, plumbing, carpentry, etc.

Note: Definitions of labour force and demographic classifications appearing in this publication are given in *The Labour Force, Australia* (6303.0).

## APPENDIX B

### EXPLANATORY NOTES

#### Introduction

1. The monthly population survey (which is described in *The Labour Force, Australia* (6203.0)) comprises the monthly labour force survey and supplementary topics. This publication contains some results of a supplementary survey run in association with the May 1989 labour force survey conducted throughout Australia.

2. Of the respondents to the labour force survey, those who fell within the scope of the supplementary survey were asked additional questions. They were asked whether they were attending, or had attended in the previous year, an educational institution and, if so, the type of educational institution and the type of attendance. If respondents were not attending an educational institution full time in May 1989 they were asked the year they finished full-time study. Persons who had left full-time study during the previous year were asked the time of the year they had left. All persons were asked about their highest educational qualifications. For persons who did not complete their schooling, the information sought included the age at which they left school. In respect of apprentices, information was obtained on their year of apprenticeship and field of trade.

#### Scope

3. The scope of this supplementary survey was restricted to persons aged 15 to 64 (with the population for apprentices further restricted to employed persons aged 15 to 34) and excluded the following persons:

- (a) members of the permanent defence forces;
- (b) certain diplomatic personnel of overseas governments, customarily excluded from census and estimated populations;
- (c) overseas residents in Australia;
- (d) members of non-Australian defence forces (and their dependents)
- (e) persons permanently unable to work;
- (f) some patients in hospitals and sanitariums; and
- (g) inmates of reformatories, gaols etc.

4. In the tables, 'All persons' refers to all persons within the scope of the survey.

#### Coverage

5. In the population survey, coverage rules are applied which aim to ensure that each person is associated with only one dwelling, and hence has only one chance of selection. See *The Labour Force, Australia* (6203.0) for more details.

#### Definitions

6. Definitions of labour force and demographic classifications appearing in this publication are given in *The Labour Force, Australia* (6203.0).

7. Unless otherwise stated, all characteristics referenced in this publication relate to the week before the interview (i.e. the reference week).

#### Results of the survey

8. Due to differences in the method of estimation used in this supplementary survey and that used in the labour force survey, there are some small variations between estimates in this publication and those in the corresponding issue of *The Labour Force, Australia* (6203.0).

9. The estimates in this publication refer to information collected in the survey month and, due to seasonal factors, may not be representative of other months of the year.

10. Results of similar surveys, conducted annually from February 1964 to February 1974, in May 1975 and 1976, in August 1977 and 1978 and annually since May 1979 have been given in previous issues of this publication. Information on apprentices was collected for the first time in May 1983.

11. It is proposed that this survey will be conducted next in May 1990.

#### Unpublished tables

12. As well as the statistics included in this and related publications, the ABS may have other relevant unpublished data available. Inquiries should be made to Ms Nicolle Wittmann on Canberra (062) 52 6578.

#### Discontinuities in the series

13. Comparison of estimates of occupation for the May 1986 and earlier surveys with later surveys is affected by the introduction of the Australian Standard Classification of Occupations (ASCO) in August 1986. This replaced the Classification and Classified List of Occupations (CCLO) previously used. 'Field of Trade' for apprentices, which is based on occupation, will also be affected. More detailed information on this changeover is available in the appendix to *The Labour Force, Australia, August 1986* (6203.0).

14. Due to the introduction of the 1986 Population Census benchmarks, estimates for May 1989 may not be strictly comparable with estimates for earlier years.

15. Where possible single year benchmarks for the ages 15 to 24 have been used. For more information on the application of single year benchmarks inquiries should be directed to Mr Leo Stinson on Canberra (062) 52 6578.

### Survey sample redesign

16. The labour force survey sample has been redesigned and reselected using information collected in the 1986 Population Census. The new sample was phased in over the period September 1987 to December 1987. For details, see *Information Paper — Labour Force Survey — Sample Design* (6269.0).

17. Estimates in this publication are subject to sampling and non-sampling error. For more information refer to the Technical Note, Appendix C.

### Estimation procedure

18. The estimates are derived from the population survey by use of a ratio estimation procedure which ensures that the estimates conform to an independently estimated distribution of the population for each capital city and remainder of state by age, gender and labour force status, rather than to the corresponding distribution within the sample itself.

### Related publications

19. Other ABS publications which may be of interest include:

*The Labour Force, Australia* (6203.0)—issued monthly

*Labour Force Status and Educational Attainment, Australia* (6235.0)—issued annually

*Labour Force Status and Educational Attendance (Persons Aged 15 to 24), Australia* (6272.0)—issued annually

*National Schools Statistics Collection, Australia* (4221.0)—issued annually

*Labour Force Experience, Australia* (6206.0)—issued annually

*Persons Not in the Labour Force, Australia* (6220.0)—issued twice-yearly

*Job Search Experience of Unemployed Persons, Australia* (6222.0)—issued two-yearly

20. Current publications produced by the ABS are listed in the *Catalogue of Publications, Australia* (1101.0). The ABS also issues, on Tuesdays and Fridays, a *Publications Advice* (1105.0) which lists publications to be released in the next few days. The Catalogue and Publications Advice are available from any ABS office.

### Symbols and other usages

- \* subject to sampling variability too high for most practical uses. See the Technical Note, Appendix C.

21. Because estimates have been rounded, discrepancies may occur between sums of the component items and totals.

### Electronic services

VIATEL. Key \*656# for selected current economic, social and demographic statistics.

AUSSTATS. Thousands of up-to-date time series are available on this ABS on-line service through PAXUS COMNET.

For further information phone the AUSSTATS Help Desk on (062) 52 6017.

TELESTATS. This service provides:

- foreign trade statistics tailored to users' requirements. Further information is available on (062) 52 5404.
- text and tables for selected Main Economic Indicator publications. Further information is available on (062) 52 5405.

### Floppy disk service

Selected ABS statistics are available on floppy disk. Further information is available on (062) 52 6684.

## APPENDIX C

## TECHNICAL NOTE

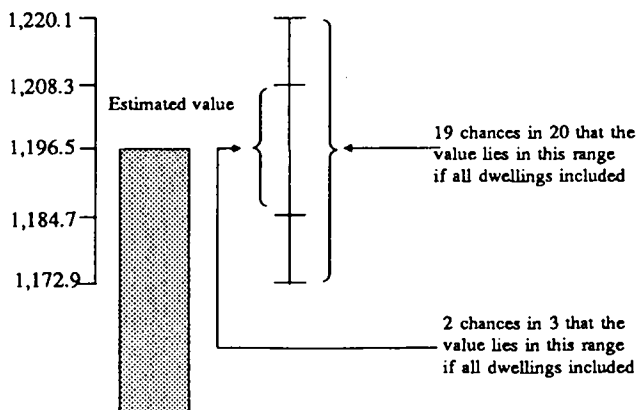
## Estimation procedure

1. Since the estimates in this publication are based on information obtained from occupants of a sample of dwellings, they are subject to sampling variability, that is, they may differ from those that would have been produced if all dwellings had been included in the survey. One measure of the likely difference is given by the *standard error*, which indicates the extent to which an estimate might have varied by chance because only a sample of dwellings was included. There are about two chances in three that a sample estimate will differ by less than one standard error from the number that would have been obtained if all dwellings had been included, and about nineteen chances in twenty that the difference will be less than two standard errors. Another measure of the likely difference is the *relative standard error*, which is obtained by expressing the standard error as a percentage of the estimate.

2. Space does not allow for the separate indication of the standard errors of all estimates in this publication. A table of standard errors for general application is given on the following page. Since they are averages based on calculations for a limited number of past surveys over a wide range of labour force characteristics these numbers will not give a precise measure of the standard error of a particular estimate but they will provide an indication of its magnitude.

3. An example of the calculation and the use of standard errors in relation to estimates of persons is as follows. Table 16 shows the estimated number of persons aged 15 to 24 who attended an educational institution full-time in 1988 is 1,196,500. Since this estimate is between 1,000,000 and 2,000,000 in the standard error table, the standard error for Australia will be between 11,100 and 14,300 and can be approximated by interpolation as 11,700 (rounded to the nearest 100). Therefore, there are about two chances in three that the value that would have been produced if all dwellings had been included in the survey will fall in the range 1,184,800 to 1,208,200 and about nineteen chances in twenty that the value will fall within the range 1,173,100 to 1,219,900. This example is illustrated in the following diagram.

('000)



4. As can be seen from the standard error table, *the smaller the estimate the higher is the relative standard error*. Very small estimates are thus subject to such high standard errors (relative to the size of the estimate) as to detract seriously from their value for most reasonable uses. In the tables in this publication only estimates with relative standard errors of 25 per cent or less and percentages based on such estimates are considered sufficiently reliable for most purposes. However, estimates and percentages with larger relative standard errors have been included and are preceded by an asterisk (e.g. \*3.4) to indicate they are subject to high standard errors and should be used with caution.

5. Proportions and percentages formed from the ratio of two estimates are also subject to sampling errors. The size of the error depends on the accuracy of both the numerator and the denominator. A formula to approximate the relative standard error (RSE) of a proportion is given below:

$$RSE (x/y) = \sqrt{[RSE (x)]^2 + [RSE (y)]^2}$$

6. Considering the example from paragraph 3 above, of the 1,196,500 persons aged 15 to 24 who attended an educational institution full time in 1988 913,500 or 76.3 per cent attended school. The standard error of 913,500 is approximately 10,600 so the relative standard error is 1.2 per cent. The relative standard error for 1,196,500 is 1.0 per cent. Applying the above formula, the relative standard error of the proportion is  $\sqrt{(1.2)^2 + (1.0)^2}$  or 0.7 per cent, giving a standard error for the proportion (76.3 per cent) of 0.5 percentage points. Therefore, there are about two chances in three that the proportion of persons aged 15 to 24 who attended school full time in 1988 is between 75.8 per cent and 76.8 per cent and nineteen chances in twenty the proportion is within the range 75.3 per cent to 77.3 per cent.

7. Published estimates may also be used to calculate the difference between two survey estimates (of numbers or percentages). Such an estimate is subject to sampling error. The sampling error of the difference between two estimates depends on their standard errors and the relationship (correlation) between them. An approximate standard error (SE) of the difference between two estimates (x-y) may be calculated by the following formula:

$$SE (x-y) = \sqrt{[SE (x)]^2 + [SE (y)]^2}$$

While this formula will only be exact for differences between separate and uncorrelated characteristics of subpopulations it is expected to provide a good approximation for all differences likely to be of interest in this publication.

8. The imprecision due to sampling variability, which is measured by the standard error, should not be confused with inaccuracies that may occur because of imperfections in reporting by interviewers and respondents, and errors made in coding and processing data. Inaccuracies of this kind are referred to as the *non-sampling error*, and they

may occur in any enumeration, whether it be a full count or a sample. Every effort is made to reduce the non-sampling error to a minimum by careful design of questionnaires, intensive training and supervision of interviewers and efficient operating procedures.

## STANDARD ERRORS OF ESTIMATES

Size of estimate	N.S.W.	Vic.	Qld	S.A.	W.A.	Tas.	N.T.	A.C.T.	Australia	Relative standard error (per cent)
	—number—									
100			130	110	120	80	130	100	120	117.6
200	230	230	190	160	180	120	170	140	180	89.0
300	290	280	240	200	220	150	210	170	230	75.2
400	340	330	280	230	250	180	240	200	270	66.6
500	380	370	310	260	280	200	260	220	300	60.5
600	420	410	340	280	310	220	280	240	340	55.9
800	480	470	390	330	350	250	320	270	390	49.2
1,000	540	530	440	370	390	280	360	300	450	44.5
1,300	620	610	500	410	440	320	400	340	510	39.6
1,500	660	650	530	440	470	340	430	360	560	37.0
1,800	720	710	580	480	510	360	470	390	610	34.0
2,000	760	750	610	510	540	380	490	410	650	32.4
2,500	850	840	680	560	600	420	540	450	730	29.2
3,000	920	910	740	610	650	450	590	490	800	26.8
3,500	990	980	800	660	700	480	630	520	870	24.9
4,000	1,050	1,050	850	700	740	510	670	550	930	23.3
4,500	1,100	1,100	900	730	780	540	710	580	990	22.0
5,000	1,200	1,150	940	770	820	560	750	600	1,050	20.9
6,000	1,300	1,250	1,000	830	880	600	810	650	1,150	19.1
10,000	1,600	1,600	1,300	1,050	1,100	730	1,050	800	1,500	14.8
20,000	2,200	2,200	1,750	1,400	1,500	920	1,400	1,050	2,050	10.4
50,000	3,250	3,250	2,600	2,050	2,150	1,200	2,150	1,500	3,150	6.3
100,000	4,300	4,300	3,400	2,650	2,850	1,500	3,000	1,900	4,300	4.3
200,000	5,700	5,600	4,500	3,450	3,700	1,750	4,200	2,450	5,800	2.9
300,000	6,600	6,600	5,200	3,950	4,300	1,900		2,800	6,900	2.3
500,000	8,000	7,900	6,300	4,750	5,200	2,100		3,300	8,400	1.7
1,000,000	10,300	10,100	8,100	6,000	6,600				11,100	1.1
2,000,000	13,000	12,800	10,300	7,500	8,400				14,300	0.7
5,000,000	17,600	17,100	13,900						19,700	0.4
10,000,000	21,800								24,800	0.2

## APPENDIX D

## POPULATIONS

- POPULATION 1:** Persons aged 15-64 (including boarding school pupils but excluding persons who are institutionalised or permanently unable to work)
- POPULATION 2:** Persons aged 15-64 who attended an educational institution in 1988
- POPULATION 3:** Persons aged 15-64 who attended school in 1988
- POPULATION 4:** Persons aged 15-64 who attended a tertiary institution in 1988
- POPULATION 5:** Persons aged 15-64 who attended an educational institution full-time in 1988
- POPULATION 6:** Persons aged 15-64 who were attending a tertiary institution in May 1989
- POPULATION 7:** Employed persons aged 15-64
- POPULATION 8:** Unemployed persons aged 15-64
- POPULATION 9:** Persons aged 15-24 who attended school in 1988 but were not attending school in May 1989
- POPULATION 10:** Persons aged 15-24 who were not attending an educational institution full-time in May 1989
- POPULATION 11:** Leavers aged 15-64
- POPULATION 12:** Employed leavers aged 15-64
- POPULATION 13:** Unemployed leavers aged 15-64
- POPULATION 14:** Persons aged 15-20 who were attending school in May 1989
- POPULATION 15:** Persons aged 15-34
- POPULATION 16:** Persons aged 15-34 who were apprentices in May 1989
- POPULATION 17:** Persons aged 15-24
- POPULATION 18:** Persons aged 15-24 who attended an educational institution full-time in 1988
- POPULATION 19:** Employed persons aged 15-24
- POPULATION 20:** Unemployed persons aged 15-24
- POPULATION 21:** Leavers aged 15-24
- POPULATION 22:** Employed leavers aged 15-24
- POPULATION 23:** Unemployed leavers aged 15-24
- POPULATION 24:** Persons aged 15-19
- POPULATION 25:** Persons aged 15-17
- POPULATION 26:** Persons who attended a tertiary institution full-time in 1988
- POPULATION 27:** Leavers from tertiary institutions



VARIABLE	POPULATIONS	9 AGE	All
<b>1 STATE OF USUAL RESIDENCE</b>	<b>All</b>	15-19 20-24 25-34 35-44 45-54 55-64	
Australia			
New South Wales			
Victoria			
Queensland			
South Australia			
Western Australia			
Tasmania			
Northern Territory			
Australian Capital Territory			
		N.B. Other age groupings are available	
<b>2 AREA OF USUAL RESIDENCE</b>	<b>All</b>	<b>10 LABOUR FORCE STATUS</b>	<b>1-6,9-11,14-15, 17,18,21,24-27</b>
Metropolitan		Labour force	
Non-metropolitan		Employed	
		Unemployed	
		Not in labour force	
<b>3 DISSEMINATION REGION</b>	<b>All</b>	Unemployment rate	
Standard labour force dissemination regions		Participation rate	
<b>4 GENDER</b>	<b>All</b>	<b>11 TYPE OF EMPLOYMENT</b>	<b>7,12,16,19,22</b>
Males		Full-time workers	
Females		Part-time workers	
<b>5 MARITAL STATUS</b>	<b>All</b>	<b>12 OCCUPATION</b>	<b>7,12,16,19,22</b>
Married		Managers and administrators	
Not-married		Professionals	
		Para-professionals	
<b>6 FAMILY STATUS</b>	<b>All</b>	Tradespersons	
Member of a family		Clerks	
Husband or wife		Salespersons and personal service workers	
With dependents present		Plant and machine operators, and drivers	
Without dependents present		Labourers and related workers	
Not-married family head		<b>13 OCCUPATION OF LAST FULL-TIME JOB</b>	<b>8,13 20,23</b>
With dependents present		Last full-time job less than 2 years ago	
Without dependents present		Managers and administrators	
Full-time student aged 15-24 (a)		Professionals	
Other child of family head		Para-professionals (a)	
Other relative of family head		Tradespersons	
Not a member of a family		Clerks	
Living alone		Salespersons and personal service workers	
Not living alone		Plant and machine operators, and drivers	
Family status not determined		Labourers and related workers	
(a) Excludes persons aged 20-24 attending school		Last full-time job 2 years or more ago	
		Had never had a full-time job	
<b>7 BIRTHPLACE</b>	<b>All</b>	(a) Includes Defence Forces personnel	
Born in Australia		<b>14 INDUSTRY</b>	<b>7,12,16,19,22</b>
Born outside Australia		Agriculture, forestry, fishing and hunting	
Born in main English-speaking countries(a)		Manufacturing	
Born in other countries		Electricity, gas and water	
Not asked (boarding school pupils)		Construction	
(a) Comprises United Kingdom, Ireland, Canada, South Africa, U.S.A. and New Zealand		Wholesale and retail trade	
N.B. More detailed country groupings available.		Transport and storage	
<b>8 PERIOD OF ARRIVAL</b>	<b>All</b>	Communication	
Born in Australia		Finance, property and business services	
Born outside Australia		Community services	
Arrived before 1961		Recreation, personal and other services	
Arrived 1961-1970		Other	
Arrived 1971-1980			
Arrived 1981-1989			
Not asked (Boarding school pupils)			

<b>15 INDUSTRY OF LAST FULL-TIME JOB</b>	<b>8,13 20,23</b>		<b>20 WHETHER ATTENDED AN EDUCATIONAL INSTITUTION AND LEVEL OF COURSE IN 1988</b>	<b>1,6-8,10,15-16</b>
<ul style="list-style-type: none"> <li>Last full-time job less than 2 years ago               <ul style="list-style-type: none"> <li>Agriculture, forestry, fishing and hunting</li> <li>Manufacturing</li> <li>Electricity, gas and water</li> <li>Construction</li> <li>Wholesale and retail trade</li> <li>Transport and storage</li> <li>Communication</li> <li>Finance, property and business services</li> <li>Community services</li> <li>Recreation, personal and other services</li> <li>Other</li> </ul> </li> <li>Last full-time job 2 years or more ago</li> <li>Had never had a full-time job</li> </ul>			<ul style="list-style-type: none"> <li>Attended in 1988               <ul style="list-style-type: none"> <li>Bachelor degree or higher</li> <li>Trade qualification/apprenticeship</li> <li>Certificate or diploma</li> <li>Secondary school course</li> <li>Hobby course</li> </ul> </li> <li>Did not attend in 1988</li> </ul>	
<b>16 DURATION OF UNEMPLOYMENT</b>	<b>8,13 20,23</b>		<b>21 WHETHER ATTENDING AN EDUCATIONAL INSTITUTION, TYPE OF EDUCATIONAL INSTITUTION ATTENDING AND TYPE OF ATTENDANCE IN MAY 1989</b>	<b>1-5,7,8,15 17-20,24-26</b>
<ul style="list-style-type: none"> <li>Under 2 weeks</li> <li>2 and under 4 weeks</li> <li>4 and under 8 weeks</li> <li>8 and under 13 weeks</li> <li>13 and under 26 weeks</li> <li>26 and under 39 weeks</li> <li>39 and under 52 weeks</li> <li>52 and under 65 weeks</li> <li>65 and under 78 weeks</li> <li>78 and under 91 weeks</li> <li>91 and under 104 weeks</li> <li>104 weeks and over</li> </ul>			<ul style="list-style-type: none"> <li>Attending in May 1989 -               <ul style="list-style-type: none"> <li>School                   <ul style="list-style-type: none"> <li>Full-time</li> <li>Part-time</li> </ul> </li> <li>Tertiary                   <ul style="list-style-type: none"> <li>Full-time</li> <li>Part-time</li> </ul> </li> <li>University                   <ul style="list-style-type: none"> <li>Full-time</li> <li>Part-time</li> </ul> </li> <li>CAE                   <ul style="list-style-type: none"> <li>Full-time</li> <li>Part-time</li> </ul> </li> <li>TAFE/technical college                   <ul style="list-style-type: none"> <li>Full-time</li> <li>Part-time</li> </ul> </li> <li>Other                   <ul style="list-style-type: none"> <li>Full-time</li> <li>Part-time</li> </ul> </li> </ul> </li> <li>Not attending in May 1989</li> </ul>	
<b>17 WHETHER HAD WORKED FULL-TIME</b>	<b>8,13 20,23</b>		<b>22 WHETHER ATTENDING AN EDUCATIONAL INSTITUTION AND LEVEL OF COURSE IN MAY 1989</b>	<b>1-5,7,-13,15, 17-27</b>
<ul style="list-style-type: none"> <li>Had never worked full-time</li> <li>Had worked full-time</li> </ul>			<ul style="list-style-type: none"> <li>Attending in May 1989               <ul style="list-style-type: none"> <li>Bachelor degree or higher</li> <li>Trade qualification/apprenticeship</li> <li>Certificate or diploma</li> <li>Secondary school course</li> <li>Hobby course</li> </ul> </li> <li>Not attending in May 1989</li> </ul>	
<b>18 WHETHER LOOKING FOR FULL-TIME OR PART-TIME WORK</b>	<b>8,13 20,23</b>		<b>23 WHETHER ATTENDED AN EDUCATIONAL INSTITUTION FULL-TIME IN 1988 AND WHETHER ATTENDING FULL-TIME IN MAY 1989</b>	<b>1-4,6-8,14-17,19, 20,24,25</b>
<ul style="list-style-type: none"> <li>Looking for full-time work</li> <li>Looking for part-time work</li> </ul>			<ul style="list-style-type: none"> <li>Attended in 1988 -               <ul style="list-style-type: none"> <li>School                   <ul style="list-style-type: none"> <li>Full-time</li> <li>Part-time</li> </ul> </li> <li>Tertiary                   <ul style="list-style-type: none"> <li>Full-time</li> <li>Part-time</li> </ul> </li> <li>University                   <ul style="list-style-type: none"> <li>Full-time</li> <li>Part-time</li> </ul> </li> <li>CAE                   <ul style="list-style-type: none"> <li>Full-time</li> <li>Part-time</li> </ul> </li> <li>TAFE/technical college                   <ul style="list-style-type: none"> <li>Full-time</li> <li>Part-time</li> </ul> </li> <li>Other                   <ul style="list-style-type: none"> <li>Full-time</li> <li>Part-time</li> </ul> </li> </ul> </li> <li>Did not attend in 1988</li> </ul>	
<b>19 WHETHER ATTENDED AN EDUCATIONAL INSTITUTION, TYPE OF EDUCATIONAL INSTITUTION ATTENDED AND TYPE OF ATTENDANCE IN 1988</b>	<b>1,6-8,10,15,16, 17,19,20,24,25</b>			

<b>24 WHETHER ATTENDED AN EDUCATIONAL INSTITUTION AND TYPE OF ATTENDANCE IN 1988, WHETHER ATTENDING FULL-TIME EDUCATION IN MAY 1989 AND LABOUR FORCE STATUS</b>	1,15,17,24,25	<b>27 YEAR LAST ATTENDED AN EDUCATIONAL INSTITUTION FULL-TIME</b>	1,7-9,15,17,19,20,24,25
<ul style="list-style-type: none"> <li>Attended an educational institution in 1988</li> <li>Attended full-time in 1988</li> <li>Attending full-time education in May 1989</li> <li>Leavers <ul style="list-style-type: none"> <li>Employed</li> <li>Full-time workers</li> <li>Part-time workers</li> </ul> </li> <li>Unemployed</li> <li>Not in labour force</li> <li>Attended part-time in 1988</li> <li>Attending an educational institution in May 1989 <ul style="list-style-type: none"> <li>Full-time</li> <li>Part-time</li> </ul> </li> <li>Not attending an educational institution in May 1989</li> <li>Did not attend an educational institution in 1988</li> </ul>		<ul style="list-style-type: none"> <li>Never attended an educational institution full-time</li> <li>Not attending full-time in May 1989</li> <li>Year last attended full-time - <ul style="list-style-type: none"> <li>Before 1980</li> <li>1980</li> <li>1981</li> <li>1982</li> <li>1983</li> <li>1984</li> <li>1985</li> <li>1986</li> <li>1987</li> <li>1988 or early 1989</li> </ul> </li> <li>Attending full-time in May 1989</li> </ul>	
<b>25 WHETHER ATTENDING SAME TYPE OF EDUCATIONAL INSTITUTION AS IN 1988, AND TYPE OF ATTENDANCE IN 1988 AND IN MAY 1989</b>	2-4	<b>28 TIME OF LEAVING FULL-TIME EDUCATION</b>	11-13,21-23
<ul style="list-style-type: none"> <li>Attending same type of institution <ul style="list-style-type: none"> <li>Attended full-time in 1988</li> <li>Attending full-time in May 1989</li> <li>Attending part-time in May 1989</li> </ul> </li> <li>Attended part-time in 1988 <ul style="list-style-type: none"> <li>Attending full-time in May 1989</li> <li>Attending part-time in May 1989</li> </ul> </li> <li>Attending different type of institution <ul style="list-style-type: none"> <li>Attended full-time in 1988 <ul style="list-style-type: none"> <li>Attending full-time in May 1989</li> <li>Attending part-time in May 1989</li> </ul> </li> <li>Attended part-time in 1988 <ul style="list-style-type: none"> <li>Attending full-time in May 1989</li> <li>Attending part-time in May 1989</li> </ul> </li> </ul> </li> <li>Not attending an educational institution <ul style="list-style-type: none"> <li>Attended full-time in 1988</li> <li>Attended part-time in 1988</li> </ul> </li> </ul>		<ul style="list-style-type: none"> <li>Left January-June 1988</li> <li>Left July-October 1988</li> <li>Left November 1988</li> <li>Left December 1988 to May 1989</li> <li>Left December 1988</li> <li>Left January-May 1989</li> </ul>	
<b>26 AGE AT TIME OF LEAVING FULL-TIME EDUCATION</b>	11-13,17,19,20	<b>29 TYPE OF SCHOOL ATTENDING IN MAY 1989</b>	14
<ul style="list-style-type: none"> <li>Never attended an educational institution full-time</li> <li>Attending full-time in May 1989</li> <li>Not attending full-time in May 1989</li> <li>Left at age - <ul style="list-style-type: none"> <li>14 or less</li> <li>15-19</li> <li>15</li> <li>16</li> <li>17</li> <li>18</li> <li>19</li> <li>20-24</li> <li>20</li> <li>21</li> <li>22</li> <li>23</li> <li>24</li> <li>25-64</li> </ul> </li> <li>Not asked</li> </ul>		<ul style="list-style-type: none"> <li>Government/State</li> <li>Non-government</li> <li>Roman Catholic</li> <li>Other</li> <li>Boarding school pupils</li> </ul>	
		<b>30 TYPE OF SCHOOL LAST ATTENDED</b>	10,17-20,24,25
		<ul style="list-style-type: none"> <li>Government/State</li> <li>Non-Government</li> <li>Roman Catholic</li> <li>Other</li> <li>Never attended school</li> <li>Not asked (Persons still at school)</li> </ul>	
		<b>31 EDUCATIONAL ATTAINMENT</b>	1-2,4-27
		<ul style="list-style-type: none"> <li>With post-school qualifications <ul style="list-style-type: none"> <li>Degree</li> <li>Trade qualification/apprenticeship</li> <li>Certificate or diploma</li> <li>Other</li> </ul> </li> <li>Without post-school qualifications <ul style="list-style-type: none"> <li>Attended the highest level of secondary school available <ul style="list-style-type: none"> <li>Attending a tertiary institution in May 1989</li> <li>Not attending a tertiary institution in May 1989</li> </ul> </li> <li>Did not attend the highest level of secondary school available <ul style="list-style-type: none"> <li>Attending a tertiary institution in May 1989</li> <li>Not attending a tertiary institution in May 1989</li> </ul> </li> <li>Never attended school</li> <li>Secondary school qualifications not determined</li> <li>Still at school</li> </ul> </li> </ul>	

<b>32 TYPE OF TERTIARY COURSE ATTENDED IN 1988</b>	<b>4,26,27</b>
Degree	
Trade qualification/apprenticeship	
Certificate or Diploma	
Secondary	
Other	
<b>33 TYPE OF TERTIARY COURSE ATTENDING IN MAY 1989</b>	<b>6</b>
Degree	
Trade qualification/Apprenticeship	
Certificate or Diploma	
Secondary	
Other	
<b>34 APPRENTICESHIP STATUS</b>	<b>15</b>
Apprentice	
Non-apprentice	
<b>35 YEAR OF APPRENTICESHIP</b>	<b>16</b>
First	
Second	
Third	
Fourth/fifth	
Fourth	
Fifth	
<b>36 SECTOR</b>	<b>16</b>
Public	
Private	
Did not know	

<b>37 FIELD OF TRADE</b>	<b>16</b>
Metal fitting and machining	
Other metal	
Electrical and electronics	
Building	
Printing	
Vehicle	
Food	
Amenity horticultural	
Hairdressers	
Other	
<b>38 CURRENT STUDY ARRANGEMENTS AND EDUCATIONAL ATTAINMENT</b>	<b>4</b>
Attended tertiary full-time in 1988	
Attending full-time in May 1989(a)	
With post-school qualifications	
Without post-school qualifications	
Leavers	
Attending tertiary part-time in May 1989	
With post-school qualifications	
Without post-school qualifications	
Not attending a tertiary institution in May 1989(a)	
With post-school qualifications	
Degree	
Trade qualification or apprenticeship	
Certificate or Diploma	
Other qualification	
Without post-school qualifications	
Attending school	
Attended tertiary part-time in 1988	
Attending full-time in May 1989	
Attending part-time in May 1989	
Not attending tertiary in May 1989	

(a) May include some persons now attending school

**SPECIAL DATA REQUEST ORDER FORM**  
**TRANSITION FROM EDUCATION TO WORK, MAY 1989**

Please specify your special data request(s) on the order form provided on the following page.

The following points should be noted when requesting special tables:

1. Table requests will be available on computer printout, floppy disk or microfiche.
2. The current cost of special tables is as follows —

No. of variables (excluding populations)	Cost per table (\$)
2	60
3	75
4	105
5	150
6 or more	negotiable

- NOTE** (i) For tables provided on floppy disk, an additional cost of \$15.00 per disk will be charged;  
(ii) For tables provided on microfiche, an additional cost of \$30.00 per microfiche will be charged;  
(iii) Prices quoted are subject to revisions.

3. Return the completed order form together with the address advice to —

Assistant Director  
Education and Training Sub-section  
Australian Bureau of Statistics  
PO Box 10  
Belconnen ACT 2616

4. The invoiced cost is payable in full within 14 days of supply.
5. Any inquiries about this order should be directed to Ms Nicolle Wittmann on (062) 52 6578.



**ADDRESS ADVICE — DETACH AND FORWARD TOGETHER WITH YOUR COMPLETED ORDER FORM.**

Please send my order and invoice to —

NAME \_\_\_\_\_

ORGANISATION \_\_\_\_\_

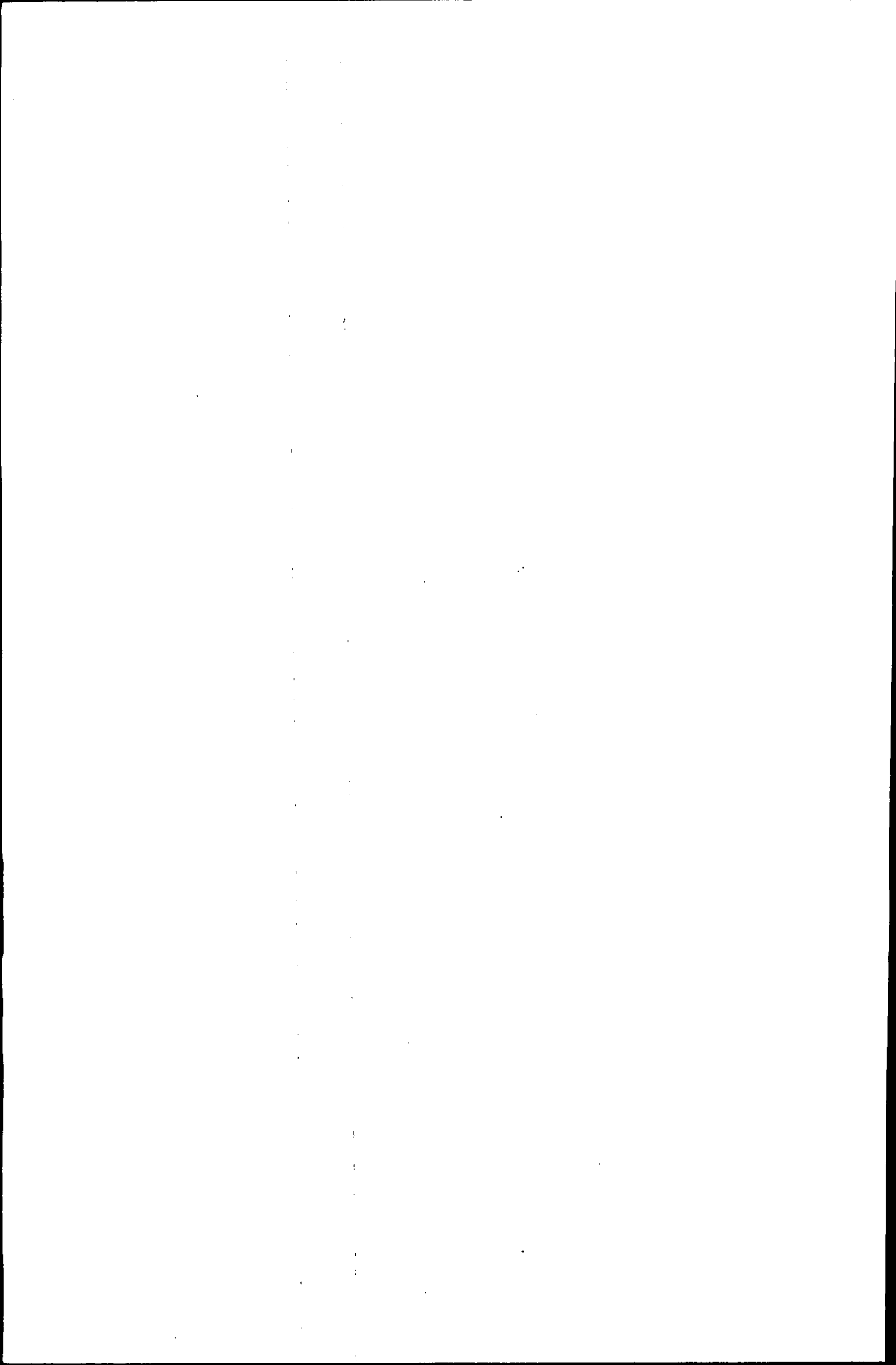
ADDRESS \_\_\_\_\_

POSTCODE \_\_\_\_\_

TELEPHONE \_\_\_\_\_

Signature \_\_\_\_\_

Date / /





**Recommended retail price: \$8.50**



**2062270005893**

ISSN 0729-2902